

## Product datasheet for **TA357159**

### IGF2 Rabbit Polyclonal Antibody

#### Product data:

Product Type:	Primary Antibodies
Applications:	WB
Reactivity:	Human, Mouse
Host:	Rabbit
Clonality:	Polyclonal
Specificity:	<b>Expected reactivity:</b> Cow, Dog, Goat, Horse, Human, Mouse, Pig, Rat, Sheep <b>Homology:</b> Cow: 93%; Dog: 93%; Goat: 93%; Horse: 86%; Human: 100%; Mouse: 92%; Pig: 85%; Rat: 92%; Sheep: 93%
Formulation:	Liquid. Purified antibody supplied in 1x PBS buffer with 0.09% (w/v) sodium azide and 2% sucrose. <i>Note that this product is shipped as lyophilized powder to China customers.</i>
Concentration:	lot specific
Purification:	Affinity Purified
Conjugation:	Unconjugated
Storage:	For short term use, store at 2-8°C up to 1 week. For long term storage, store at -20°C in small aliquots to prevent freeze-thaw cycles.
Stability:	Shelf life: one year from despatch.
Predicted Protein Size:	25kDa
Gene Name:	insulin like growth factor 2
Database Link:	<a href="#">NP_001121070</a> <a href="#">Entrez Gene 16002 Mouse</a> <a href="#">Entrez Gene 3481 Human</a> <a href="#">C9JAF2</a>
Background:	This gene encodes a member of the insulin family of polypeptide growth factors, which are involved in development and growth. It is an imprinted gene, expressed only from the paternal allele, and epigenetic changes at this locus are associated with Wilms tumour, Beckwith-Wiedemann syndrome, rhabdomyosarcoma, and Silver-Russell syndrome. A read-through INS-IGF2 gene exists, whose 5' region overlaps the INS gene and the 3' region overlaps this gene. Alternatively spliced transcript variants encoding different isoforms have been found for this gene.

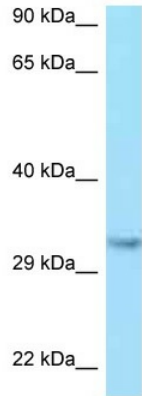


[View online »](#)

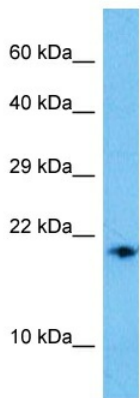
**Synonyms:** C11orf43; FLJ22066; FLJ44734; IGF-II; INSIGF; OTTHUMP00000011018; OTTHUMP00000011157; pp9974; Somatomedin-A

**Protein Families:** Druggable Genome, ES Cell Differentiation/IPS, Secreted Protein

**Product images:**



WB Suggested Anti-IGF2 Antibody  
Titration: 1.0 ug/ml  
Positive Control: Hela Whole Cell



Host: Rabbit  
Target Name: Igf2  
Sample Type: Mouse Spleen Lysate  
Antibody Dilution: 1.0µg/ml

Host: Mouse  
Target Name: IGF2  
Sample Tissue: Mouse Spleen  
Antibody Dilution: 1 ug/ml