

Product datasheet for TA357146

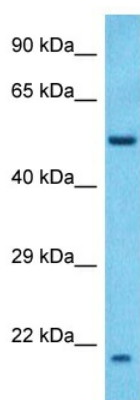
ASRGL1 Rabbit Polyclonal Antibody

Product data:

Product Type:	Primary Antibodies
Applications:	WB
Reactivity:	Human
Host:	Rabbit
Clonality:	Polyclonal
Immunogen:	The immunogen is a synthetic peptide directed towards the middle region of Human ASGL1
Specificity:	Expected reactivity: Cow, Dog, Guinea Pig, Horse, Human, Mouse, Rabbit, Rat, Sheep, Zebrafish Homology: Cow: 100%; Dog: 93%; Guinea Pig: 93%; Horse: 100%; Human: 100%; Mouse: 86%; Rabbit: 93%; Rat: 93%; Sheep: 100%; Zebrafish: 86%
Formulation:	Liquid. Purified antibody supplied in 1x PBS buffer with 0.09% (w/v) sodium azide and 2% sucrose. <i>Note that this product is shipped as lyophilized powder to China customers.</i>
Concentration:	lot specific
Purification:	Affinity purified
Conjugation:	Unconjugated
Storage:	For short term use, store at 2-8°C up to 1 week. For long term storage, store at -20°C in small aliquots to prevent freeze-thaw cycles.
Stability:	Shelf life: one year from despatch.
Predicted Protein Size:	19kDa
Gene Name:	asparaginase like 1
Database Link:	XP_005274363 Entrez Gene 80150 Human Q7L266-2
Synonyms:	ALP; ALP1; CRASH; FLJ22316



[View online »](#)

Product images:

Host: Rabbit
Target Name: ASGL1
Sample Tissue: Thymus Tumor Lysate
Antibody Dilution: 1.0 μ g/ml

Host: Rabbit
Target Name: ASGL1
Sample Type: Thymus Tumor lysates
Antibody Dilution: 1.0ug/ml