

Product datasheet for **TA357145**

TAF7L Rabbit Polyclonal Antibody

Product data:

Product Type:	Primary Antibodies
Applications:	WB
Reactivity:	Human
Host:	Rabbit
Clonality:	Polyclonal
Specificity:	Expected reactivity: Cow, Dog, Guinea Pig, Horse, Human, Mouse, Pig, Rabbit, Rat Homology: Cow: 86%; Dog: 86%; Guinea Pig: 79%; Horse: 79%; Human: 100%; Mouse: 92%; Pig: 93%; Rabbit: 79%; Rat: 92%
Formulation:	Liquid. Purified antibody supplied in 1x PBS buffer with 0.09% (w/v) sodium azide and 2% sucrose. <i>Note that this product is shipped as lyophilized powder to China customers.</i>
Concentration:	lot specific
Purification:	Affinity Purified
Conjugation:	Unconjugated
Storage:	For short term use, store at 2-8°C up to 1 week. For long term storage, store at -20°C in small aliquots to prevent freeze-thaw cycles.
Stability:	Shelf life: one year from despatch.
Predicted Protein Size:	41kDa
Gene Name:	TATA-box binding protein associated factor 7 like
Database Link:	NP_001161946 Entrez Gene 54457 Human Q5H9L4-2
Background:	This gene is similar to a mouse gene that encodes a TATA box binding protein-associated factor, and shows testis-specific expression. The encoded protein could be a spermatogenesis-specific component of the DNA-binding general transcription factor complex TFIID. Alternatively spliced transcript variants encoding different isoforms have been found for this gene.
Synonyms:	CT40; FLJ23157; TAF2Q

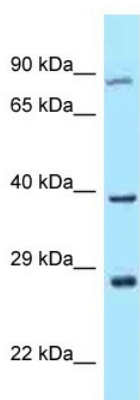


[View online »](#)

Protein Families: Transcription Factors

Protein Pathways: Basal transcription factors

Product images:



WB Suggested Anti-TAF7L Antibody
Titration: 1.0 ug/ml
Positive Control: OVCAR-3 Whole Cell TAF7L is supported by BioGPS gene expression data to be expressed in OVCAR3