

Product datasheet for **TA357144**

CHODL Rabbit Polyclonal Antibody

Product data:

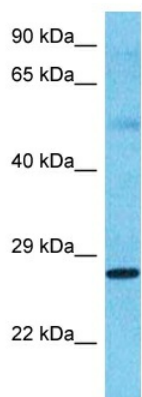
Product Type:	Primary Antibodies
Applications:	WB
Reactivity:	Human
Host:	Rabbit
Clonality:	Polyclonal
Immunogen:	The immunogen is a synthetic peptide directed towards the N-terminal region of Human CHODL
Specificity:	Expected reactivity: Cow, Dog, Guinea Pig, Horse, Human, Mouse, Rabbit, Rat Homology: Cow: 86%; Dog: 100%; Guinea Pig: 100%; Horse: 100%; Human: 100%; Mouse: 100%; Rabbit: 100%; Rat: 100%
Formulation:	Liquid. Purified antibody supplied in 1x PBS buffer with 0.09% (w/v) sodium azide and 2% sucrose. <i>Note that this product is shipped as lyophilized powder to China customers.</i>
Concentration:	lot specific
Purification:	Affinity purified
Conjugation:	Unconjugated
Storage:	For short term use, store at 2-8°C up to 1 week. For long term storage, store at -20°C in small aliquots to prevent freeze-thaw cycles.
Stability:	Shelf life: one year from despatch.
Predicted Protein Size:	25kDa
Gene Name:	chondrolectin
Database Link:	Entrez Gene 140578 Human Q9H9P2-2
Background:	This gene encodes a type I membrane protein with a carbohydrate recognition domain characteristic of C-type lectins in its extracellular portion. In other proteins, this domain is involved in endocytosis of glycoproteins and exogenous sugar-bearing pathogens. This protein localizes predominantly to the perinuclear region. Several transcript variants encoding a few different isoforms have been found for this gene.



[View online »](#)

Synonyms: C21orf68; chondrolectin; FLJ12627; MT75; PRED12

Product images:



Host: Rabbit
Target Name: CHODL
Sample Tissue: Thymus Tumor Lysate
Antibody Dilution: 1.0µg/ml

Host: Rabbit
Target Name: CHODL
Sample Type: Thymus Tumor lysates
Antibody Dilution: 1.0ug/ml