

Product datasheet for **TA357137**

Ift88 Rabbit Polyclonal Antibody

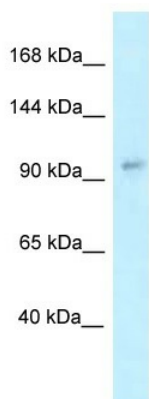
Product data:

Product Type:	Primary Antibodies
Applications:	IHC, WB
Reactivity:	Human, Rat
Host:	Rabbit
Clonality:	Polyclonal
Specificity:	Expected reactivity: Cow, Dog, Guinea Pig, Horse, Human, Mouse, Rabbit, Rat, Zebrafish Homology: Cow: 100%; Dog: 100%; Guinea Pig: 100%; Horse: 100%; Human: 100%; Mouse: 93%; Rabbit: 100%; Rat: 93%; Zebrafish: 85%
Formulation:	Liquid. Purified antibody supplied in 1x PBS buffer with 0.09% (w/v) sodium azide and 2% sucrose. <i>Note that this product is shipped as lyophilized powder to China customers.</i>
Concentration:	lot specific
Purification:	Affinity Purified
Conjugation:	Unconjugated
Storage:	For short term use, store at 2-8°C up to 1 week. For long term storage, store at -20°C in small aliquots to prevent freeze-thaw cycles.
Stability:	Shelf life: one year from despatch.
Predicted Protein Size:	89kDa
Gene Name:	intraflagellar transport 88
Database Link:	NP_001100736 Entrez Gene 8100 Human Entrez Gene 305918 Rat D4ACI9
Background:	The function of this protein remains unknown.
Synonyms:	D13S1056E; DAF19; hTg737; MGC26259; polaris; RP11-172H24.2; TG737; TTC10

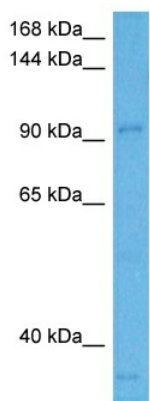


[View online »](#)

Product images:

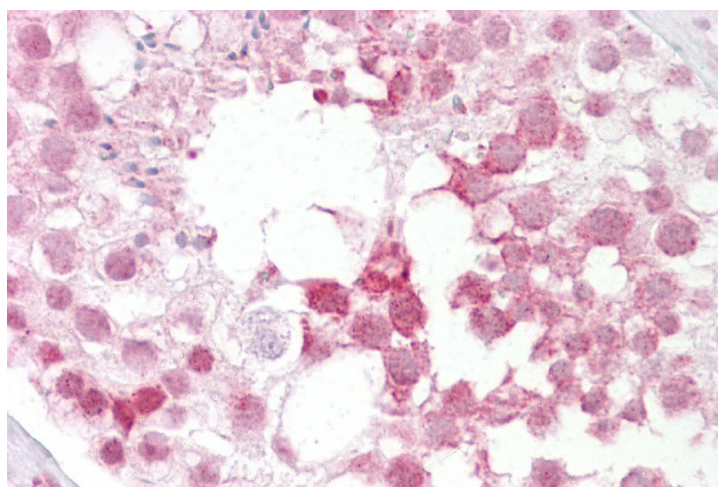


WB Suggested Anti-Ift88 Antibody Titration: 1 ug/ml
Positive Control: Rat Brain lysate



Host: Rabbit
Target Name: IFT88
Sample Type: Rat Spleen Cell Lysate
Antibody Dilution: 1.0µg/ml

Host: Rabbit
Target Name: IFT88
Sample Tissue: Rat Rat Spleen
Antibody Dilution: 5ug/ml



Immunohistochemistry with Testis tissue