

## Product datasheet for **TA357135**

### Prkaa1 Rabbit Polyclonal Antibody

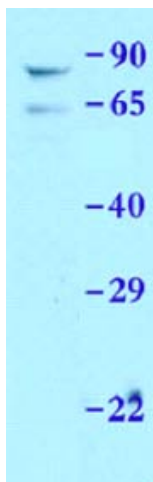
#### Product data:

Product Type:	Primary Antibodies
Applications:	WB
Reactivity:	Human, Mouse, Rat
Host:	Rabbit
Clonality:	Polyclonal
Specificity:	<b>Expected reactivity:</b> Cow, Dog, Guinea Pig, Horse, Human, Mouse, Rabbit, Rat, Sheep, Yeast, Zebrafish <b>Homology:</b> Cow: 100%; Dog: 100%; Guinea Pig: 100%; Horse: 100%; Human: 100%; Mouse: 100%; Rabbit: 100%; Rat: 100%; Sheep: 79%; Yeast: 77%; Zebrafish: 93%
Formulation:	Liquid. Purified antibody supplied in 1x PBS buffer with 0.09% (w/v) sodium azide and 2% sucrose. <i>Note that this product is shipped as lyophilized powder to China customers.</i>
Concentration:	lot specific
Purification:	Affinity Purified
Conjugation:	Unconjugated
Storage:	For short term use, store at 2-8°C up to 1 week. For long term storage, store at -20°C in small aliquots to prevent freeze-thaw cycles.
Stability:	Shelf life: one year from despatch.
Predicted Protein Size:	60kDa
Gene Name:	protein kinase, AMP-activated, alpha 1 catalytic subunit
Database Link:	<a href="#">NP_001013385</a> <a href="#">Entrez Gene 5562 Human</a> <a href="#">Entrez Gene 65248 Rat</a> <a href="#">Entrez Gene 105787 Mouse</a> <a href="#">Q5EG47</a>
Background:	Prkaa1 is a catalytic subunit of AMP-activated protein kinase (AMPK), an energy sensor protein kinase that plays a key role in regulating cellular energy metabolism.
Synonyms:	AMPK; AMPK1; AMPKa1; MGC33776; MGC57364

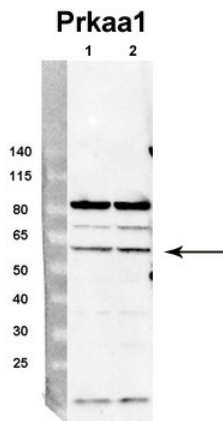


[View online »](#)

Product images:

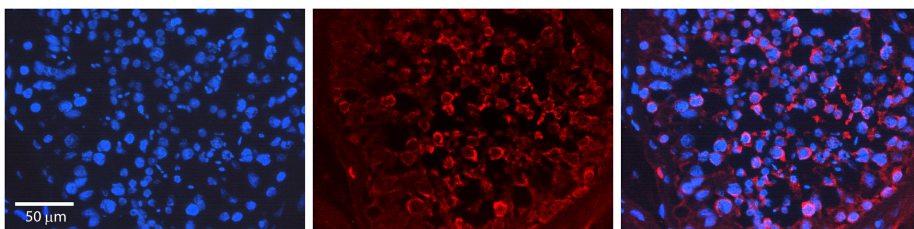


Prkaa1 antibody - N-terminal region (TA357135) validated by WB using mouse liver at 1:1000.



See Immunoblot 2 Data and Customer Feedback tab for more information.

**Sample Type:** rat hepatocyte (50ug)  
**Primary Dilution:** 1:1000  
**Secondary Antibody:** Donkey anti-Rabbit HRP  
**Secondary Dilution:** 1:10,000  
**Image Submitted By:** Dustin Singer, INRA/AgroParistech



Rabbit Anti-PRKAA1 Antibody  
 Catalog Number: TA357135  
 Formalin Fixed Paraffin Embedded Tissue:  
 Human Testis Tissue  
 Observed Staining: Cytoplasm  
 Primary Antibody Concentration: 1:100  
 Other Working Concentrations: N/A  
 Secondary Antibody: Donkey anti-Rabbit-Cy3  
 Secondary Antibody Concentration: 1:200  
 Magnification: 20X  
 Exposure Time: 0.5–2.0 sec