

## Product datasheet for **TA357130**

### ADAM2 Rabbit Polyclonal Antibody

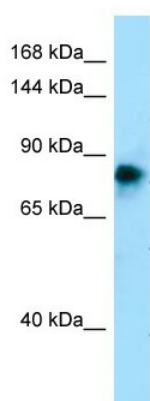
#### Product data:

Product Type:	Primary Antibodies
Applications:	WB
Reactivity:	Human
Host:	Rabbit
Clonality:	Polyclonal
Specificity:	<b>Expected reactivity:</b> Human, Pig, Rat <b>Homology:</b> Human: 100%; Pig: 79%; Rat: 79%
Formulation:	Liquid. Purified antibody supplied in 1x PBS buffer with 0.09% (w/v) sodium azide and 2% sucrose. <i>Note that this product is shipped as lyophilized powder to China customers.</i>
Concentration:	lot specific
Purification:	Affinity Purified
Conjugation:	Unconjugated
Storage:	For short term use, store at 2-8°C up to 1 week. For long term storage, store at -20°C in small aliquots to prevent freeze-thaw cycles.
Stability:	Shelf life: one year from despatch.
Predicted Protein Size:	81kDa
Gene Name:	ADAM metallopeptidase domain 2
Database Link:	<a href="#">NP_001455</a> <a href="#">Entrez Gene 2515 Human</a> <a href="#">Q99965</a>
Background:	ADAM2 is a member of the ADAM (a disintegrin and metalloprotease domain) family. Members of this family are membrane-anchored proteins structurally related to snake venom disintegrins, and have been implicated in a variety of biological processes involving cell-cell and cell-matrix interactions, including fertilization, muscle development, and neurogenesis. ADAM2 is a subunit of an integral sperm membrane glycoprotein called fertilin, which plays an important role in sperm-egg interactions.
Synonyms:	CRYN1; CRYN2; CT15; FTNB; PH-30; PH-30b; PH30; PH30-beta



[View online »](#)

Protein Families: Druggable Genome, Protease, Transmembrane

**Product images:**

WB Suggested Anti-ADAM2 Antibody  
Titration: 1.0 ug/ml  
Positive Control: Fetal Skin