

Product datasheet for TA357125

C20orf132 (MROH8) Rabbit Polyclonal Antibody

Product data:

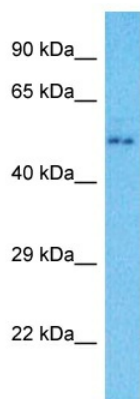
Product Type:	Primary Antibodies
Applications:	WB
Reactivity:	Human
Host:	Rabbit
Clonality:	Polyclonal
Immunogen:	The immunogen is a synthetic peptide directed towards the C-terminal region of Human MROH8
Specificity:	Expected reactivity: Cow, Dog, Guinea Pig, Horse, Human, Mouse, Rabbit, Rat Homology: Cow: 79%; Dog: 93%; Guinea Pig: 86%; Horse: 86%; Human: 100%; Mouse: 100%; Rabbit: 93%; Rat: 100%
Formulation:	Liquid. Purified antibody supplied in 1x PBS buffer with 0.09% (w/v) sodium azide and 2% sucrose.
Concentration:	lot specific
Purification:	Affinity purified
Conjugation:	Unconjugated
Storage:	For short term use, store at 2-8°C up to 1 week. For long term storage, store at -20°C in small aliquots to prevent freeze-thaw cycles.
Stability:	Shelf life: one year from despatch.
Predicted Protein Size:	53kDa
Gene Name:	maestro heat like repeat family member 8
Database Link:	NP_998797 Entrez Gene 140699 Human Q9H579
Background:	The protein encoded by this gene belongs to the maestro heat-like repeat family. The exact function of this gene is not known, however, in a genome-wide association study using hippocampal atrophy as a quantitative trait, this gene has been associated with Alzheimer's disease (PMID:19668339). Alternatively spliced transcript variants encoding different isoforms have been found for this gene.



[View online »](#)

Synonyms: 4922505G16Rik

Product images:



Host: Rabbit
Target Name: MROH8
Sample Tissue: Ovary Tumor Lysate
Antibody Dilution: 1.0µg/ml

Host: Rabbit
Target Name: MROH8
Sample Type: Ovary Tumor lysates
Antibody Dilution: 1.0ug/ml