

Product datasheet for **TA357124**

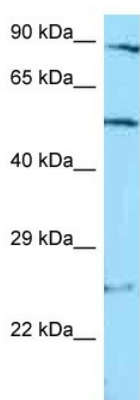
AMSH (STAMBP) Rabbit Polyclonal Antibody

Product data:

Product Type:	Primary Antibodies
Applications:	WB
Reactivity:	Human
Host:	Rabbit
Clonality:	Polyclonal
Specificity:	Expected reactivity: Cow, Dog, Guinea Pig, Horse, Human, Mouse, Rabbit, Rat, Zebrafish Homology: Cow: 100%; Dog: 100%; Guinea Pig: 100%; Horse: 100%; Human: 100%; Mouse: 86%; Rabbit: 100%; Rat: 100%; Zebrafish: 93%
Formulation:	Liquid. Purified antibody supplied in 1x PBS buffer with 0.09% (w/v) sodium azide and 2% sucrose. <i>Note that this product is shipped as lyophilized powder to China customers.</i>
Concentration:	lot specific
Purification:	Affinity Purified
Conjugation:	Unconjugated
Storage:	For short term use, store at 2-8°C up to 1 week. For long term storage, store at -20°C in small aliquots to prevent freeze-thaw cycles.
Stability:	Shelf life: one year from despatch.
Predicted Protein Size:	48kDa
Gene Name:	STAM binding protein
Database Link:	NP_998787 Entrez Gene 10617 Human O95630
Background:	STAMBPL1 is a zinc metalloprotease that specifically cleaves 'Lys-63'-linked polyubiquitin chains. STAMBPL1 does not cleave 'Lys-48'-linked polyubiquitin chains.
Synonyms:	AMSH; MGC126516; MGC126518; OTTHUMP00000202512
Protein Families:	Druggable Genome
Protein Pathways:	Endocytosis



[View online »](#)

Product images:

WB Suggested Anti-STAMPB Antibody
Titration: 1.0 ug/ml
Positive Control: Jurkat Whole Cell
STAMPB is supported by BioGPS gene expression data to be expressed in Jurkat