

Product datasheet for **TA357122**

TUBA3E Rabbit Polyclonal Antibody

Product data:

Product Type:	Primary Antibodies
Applications:	WB
Reactivity:	Human
Host:	Rabbit
Clonality:	Polyclonal
Immunogen:	The immunogen is a synthetic peptide directed towards the middle region of Human TBA3E
Specificity:	Expected reactivity: Guinea Pig, Human, Rabbit, Rat, Zebrafish Homology: Guinea Pig: 100%; Human: 100%; Rabbit: 93%; Rat: 100%; Zebrafish: 93%
Formulation:	Liquid. Purified antibody supplied in 1x PBS buffer with 0.09% (w/v) sodium azide and 2% sucrose. <i>Note that this product is shipped as lyophilized powder to China customers.</i>
Concentration:	lot specific
Purification:	Affinity purified
Conjugation:	Unconjugated
Storage:	For short term use, store at 2-8°C up to 1 week. For long term storage, store at -20°C in small aliquots to prevent freeze-thaw cycles.
Stability:	Shelf life: one year from despatch.
Predicted Protein Size:	49kDa
Gene Name:	tubulin alpha 3e
Database Link:	NP_997195 Entrez Gene 112714 Human Q6PEY2



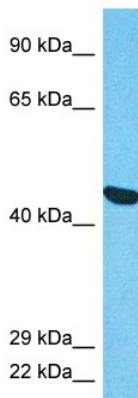
[View online »](#)

Background:

Microtubules of the eukaryotic cytoskeleton perform essential and diverse functions and are composed of a heterodimer of alpha and beta tubulin. The genes encoding these microtubule constituents are part of the tubulin superfamily, which is composed of six distinct families. Genes from the alpha, beta and gamma tubulin families are found in all eukaryotes. The alpha and beta tubulins represent the major components of microtubules, while gamma tubulin plays a critical role in the nucleation of microtubule assembly. This gene encodes an alpha tubulin that highly conserved among species. A missense mutation in this gene has been potentially linked to microlissencephaly and global developmental delay.

Synonyms:

TUBA3E

Product images:

Host: Rabbit
Target Name: TBA3E
Sample Tissue: A549 Cell Lysate
Antibody Dilution: 1.0µg/ml

Host: Rabbit
Target Name: TBA3E
Sample Type: A549 Whole Cell lysates
Antibody Dilution: 1.0ug/ml