

Product datasheet for TA357120

LYPD6 Rabbit Polyclonal Antibody

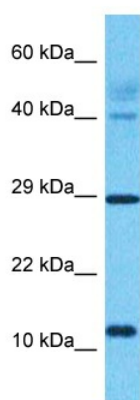
Product data:

Product Type:	Primary Antibodies
Applications:	WB
Reactivity:	Human
Host:	Rabbit
Clonality:	Polyclonal
Immunogen:	The immunogen is a synthetic peptide directed towards the C-terminal region of Human LYPD6
Specificity:	Expected reactivity: Cow, Dog, Guinea Pig, Horse, Human, Mouse, Rat, Zebrafish Homology: Cow: 77%; Dog: 100%; Guinea Pig: 100%; Horse: 100%; Human: 100%; Mouse: 100%; Rat: 100%; Zebrafish: 93%
Formulation:	Liquid. Purified antibody supplied in 1x PBS buffer with 0.09% (w/v) sodium azide and 2% sucrose.
Concentration:	lot specific
Purification:	Affinity Purified
Conjugation:	Unconjugated
Storage:	For short term use, store at 2-8°C up to 1 week. For long term storage, store at -20°C in small aliquots to prevent freeze-thaw cycles.
Stability:	Shelf life: one year from despatch.
Predicted Protein Size:	8kDa
Gene Name:	LY6/PLAUR domain containing 6
Database Link:	Entrez Gene 130574 Human Q86Y78-2
Background:	Members of the LY6 protein family (see SLURP1; MIM 606119), such as LYPD6, have at least one 80-amino acid LU domain that contains 10 conserved cysteines with a defined disulfide-bonding pattern.
Synonyms:	MGC52057; OTTHUMP00000204367



[View online »](#)

Product images:



Host: Rabbit
Target Name: LYPD6
Sample Tissue: Lung Tumor Lysate
Antibody Dilution: 1.0 μ g/ml

Host: Rabbit
Target Name: LYPD6
Sample Type: Lung Tumor lysates
Antibody Dilution: 1.0 μ g/ml