

## Product datasheet for **TA357119**

### Phactr3 Rabbit Polyclonal Antibody

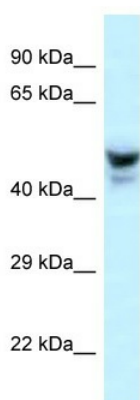
#### Product data:

Product Type:	Primary Antibodies
Applications:	WB
Reactivity:	Mouse
Host:	Rabbit
Clonality:	Polyclonal
Specificity:	<b>Expected reactivity:</b> Cow, Dog, Guinea Pig, Horse, Human, Mouse, Rabbit, Rat, Zebrafish <b>Homology:</b> Cow: 93%; Dog: 86%; Guinea Pig: 100%; Horse: 93%; Human: 100%; Mouse: 100%; Rabbit: 86%; Rat: 100%; Zebrafish: 75%
Formulation:	Liquid. Purified antibody supplied in 1x PBS buffer with 0.09% (w/v) sodium azide and 2% sucrose.
Concentration:	lot specific
Purification:	Affinity Purified
Conjugation:	Unconjugated
Storage:	For short term use, store at 2-8°C up to 1 week. For long term storage, store at -20°C in small aliquots to prevent freeze-thaw cycles.
Stability:	Shelf life: one year from despatch.
Predicted Protein Size:	57kDa
Gene Name:	phosphatase and actin regulator 3
Database Link:	<a href="#">NP_001007155</a> <a href="#">Entrez Gene 74189 Mouse</a> <a href="#">Q6KCA9</a>
Background:	The function of this protein remains unknown.
Synonyms:	C20orf101; H17739; MGC117178; OTTHUMP00000174467; SCAPIN1; SCAPININ



[View online »](#)

Product images:



WB Suggested Anti-Phactr3 Antibody  
Titration: 1.0 ug/ml  
Positive Control: Mouse Liver