

## Product datasheet for **TA357108**

### **C20orf85 Rabbit Polyclonal Antibody**

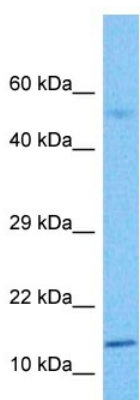
#### **Product data:**

Product Type:	Primary Antibodies
Applications:	WB
Reactivity:	Human
Host:	Rabbit
Clonality:	Polyclonal
Immunogen:	The immunogen is a synthetic peptide directed towards the middle region of human CT085
Specificity:	<b>Expected reactivity:</b> Human <b>Homology:</b> Cow: 92%; Dog: 85%; Guinea Pig: 93%; Horse: 92%; Human: 100%; Rabbit: 93%; Rat: 93%
Formulation:	Liquid. Purified antibody supplied in 1x PBS buffer with 0.09% (w/v) sodium azide and 2% sucrose.
Concentration:	lot specific
Purification:	Affinity purified
Conjugation:	Unconjugated
Storage:	For short term use, store at 2-8°C up to 1 week. For long term storage, store at -20°C in small aliquots to prevent freeze-thaw cycles.
Stability:	Shelf life: one year from despatch.
Predicted Protein Size:	15 kDa
Gene Name:	chromosome 20 open reading frame 85
Database Link:	<a href="#">NP_848551.1</a> <a href="#">Entrez Gene 128602 Human</a> <a href="#">Q9H1P6</a>
Synonyms:	bA196N14.1; LLC1



[View online »](#)

## Product images:



Host: Rabbit  
Target Name: CT085  
Sample Type: Lymph Node Tumor Lysate  
Antibody Dilution: 1.0 $\mu$ g/ml

Host: Rabbit  
Target Name: CT085  
Sample Tissue: Lymph Node Tumor lysates  
Antibody Dilution: 1  $\mu$ g/ml