

Product datasheet for TA357107

PDE12 Rabbit Polyclonal Antibody

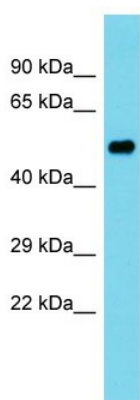
Product data:

Product Type:	Primary Antibodies
Applications:	WB
Reactivity:	Human
Host:	Rabbit
Clonality:	Polyclonal
Immunogen:	The immunogen is a synthetic peptide directed towards the C-terminal region of human PDE12
Specificity:	Expected reactivity: Cow, Dog, Guinea Pig, Horse, Human, Mouse, Rabbit, Rat, Zebrafish Homology: Cow: 100%; Dog: 93%; Guinea Pig: 100%; Horse: 100%; Human: 100%; Mouse: 100%; Rabbit: 93%; Rat: 100%; Zebrafish: 79%
Formulation:	Liquid. Purified antibody supplied in 1x PBS buffer with 0.09% (w/v) sodium azide and 2% sucrose.
Concentration:	lot specific
Purification:	Affinity Purified
Conjugation:	Unconjugated
Storage:	For short term use, store at 2-8°C up to 1 week. For long term storage, store at -20°C in small aliquots to prevent freeze-thaw cycles.
Stability:	Shelf life: one year from despatch.
Predicted Protein Size:	51kDa
Gene Name:	phosphodiesterase 12
Database Link:	NP_808881.3 Entrez Gene 201626 Human Q6L8Q7
Synonyms:	2-PDE; DKFZp667B1218

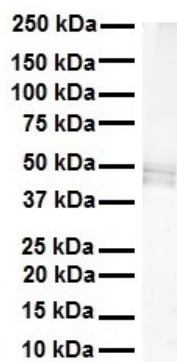


[View online »](#)

Product images:



Host: Rabbit
Target Name: PDE12
Sample Type: Ovary Tumor lysates
Antibody Dilution: 1.0ug/ml



WB Suggested Anti-PDE12 antibody Titration: 1 ug/mL
Sample Type: Human heart