

## Product datasheet for **TA357105**

### IMP5 (SPPL2C) Rabbit Polyclonal Antibody

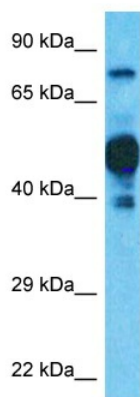
#### Product data:

Product Type:	Primary Antibodies
Applications:	WB
Reactivity:	Human
Host:	Rabbit
Clonality:	Polyclonal
Immunogen:	The immunogen is a synthetic peptide directed towards the C-terminal region of Human SPPL2C
Specificity:	<b>Expected reactivity:</b> Human <b>Homology:</b> Human: 100%
Formulation:	Liquid. Purified antibody supplied in 1x PBS buffer with 0.09% (w/v) sodium azide and 2% sucrose.
Concentration:	lot specific
Purification:	Affinity Purified
Conjugation:	Unconjugated
Storage:	For short term use, store at 2-8°C up to 1 week. For long term storage, store at -20°C in small aliquots to prevent freeze-thaw cycles.
Stability:	Shelf life: one year from despatch.
Predicted Protein Size:	75kDa
Gene Name:	signal peptide peptidase like 2C
Database Link:	<a href="#">NP_787078</a> <a href="#">Entrez Gene 162540 Human</a> <a href="#">Q8IUH8</a>
Background:	Intramembrane-cleaving aspartic protease (I-CLiP) that may be able to cleave type II membrane signal peptides in the hydrophobic plane of the membrane (By similarity). .
Synonyms:	IMP5



[View online »](#)

## Product images:



Host: Rabbit  
Target Name: SPPL2C  
Sample Tissue: Ovary Tumor Lysate  
Antibody Dilution: 1.0 $\mu$ g/ml

Host: Rabbit  
Target Name: SPPL2C  
Sample Type: Ovary Tumor lysates  
Antibody Dilution: 1.0 $\mu$ g/ml