

Product datasheet for **TA357101**

PCP2 Rabbit Polyclonal Antibody

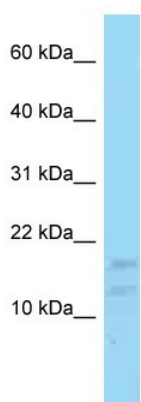
Product data:

Product Type:	Primary Antibodies
Applications:	WB
Reactivity:	Human
Host:	Rabbit
Clonality:	Polyclonal
Specificity:	Expected reactivity: Cow, Dog, Guinea Pig, Horse, Human, Mouse, Pig, Rabbit, Rat Homology: Cow: 100%; Dog: 100%; Guinea Pig: 83%; Horse: 100%; Human: 100%; Mouse: 100%; Pig: 100%; Rabbit: 100%; Rat: 100%
Formulation:	Liquid. Purified antibody supplied in 1x PBS buffer with 0.09% (w/v) sodium azide and 2% sucrose.
Concentration:	lot specific
Purification:	Affinity Purified
Conjugation:	Unconjugated
Storage:	For short term use, store at 2-8°C up to 1 week. For long term storage, store at -20°C in small aliquots to prevent freeze-thaw cycles.
Stability:	Shelf life: one year from despatch.
Predicted Protein Size:	14kDa
Gene Name:	Purkinje cell protein 2
Database Link:	NP_777555 Entrez Gene 126006 Human Q8IVA1
Background:	PCP2 may function as a cell-type specific modulator for G protein-mediated cell signaling.
Synonyms:	DKFZp686M0187; FLJ27345; GPSM4; L7; MGC41903



[View online »](#)

Product images:



WB Suggested Anti-PCP2 Antibody
Titration: 1.0 ug/ml
Positive Control: MCF7 Whole Cell