

Product datasheet for **TA357095**

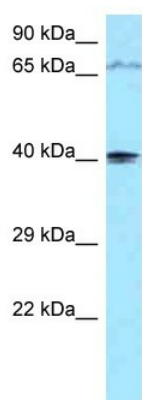
PIP5KL1 Rabbit Polyclonal Antibody

Product data:

Product Type:	Primary Antibodies
Applications:	WB
Reactivity:	Human
Host:	Rabbit
Clonality:	Polyclonal
Specificity:	Expected reactivity: Cow, Dog, Horse, Human, Pig, Rat Homology: Cow: 100%; Dog: 100%; Horse: 86%; Human: 100%; Pig: 79%; Rat: 79%
Formulation:	Liquid. Purified antibody supplied in 1x PBS buffer with 0.09% (w/v) sodium azide and 2% sucrose.
Concentration:	lot specific
Purification:	Affinity Purified
Conjugation:	Unconjugated
Storage:	For short term use, store at 2-8°C up to 1 week. For long term storage, store at -20°C in small aliquots to prevent freeze-thaw cycles.
Stability:	Shelf life: one year from despatch.
Predicted Protein Size:	43kDa
Gene Name:	phosphatidylinositol-4-phosphate 5-kinase like 1
Database Link:	NP_001128691 Entrez Gene 138429 Human Q5T9C9
Background:	PIP5KL1 is a phosphoinositide kinase-like protein that lacks intrinsic lipid kinase activity but associates with type I PIPKs (see PIP5K1A; MIM 603275) and may play a role in localization of PIPK activity.
Synonyms:	bA203J24.5; MGC46424; PIPKH
Protein Families:	Druggable Genome



[View online »](#)

Product images:

WB Suggested Anti-PIP5KL1 Antibody
Titration: 1.0 ug/ml
Positive Control: THP-1 Whole Cell