

Product datasheet for **TA357083**

PROCA1 Rabbit Polyclonal Antibody

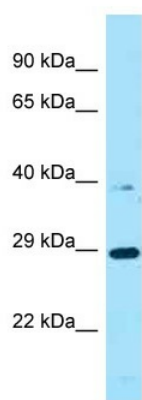
Product data:

Product Type:	Primary Antibodies
Applications:	WB
Reactivity:	Human
Host:	Rabbit
Clonality:	Polyclonal
Specificity:	Expected reactivity: Human, Rabbit Homology: Human: 100%; Rabbit: 92%
Formulation:	Liquid. Purified antibody supplied in 1x PBS buffer with 0.09% (w/v) sodium azide and 2% sucrose. <i>Note that this product is shipped as lyophilized powder to China customers.</i>
Concentration:	lot specific
Purification:	Affinity Purified
Conjugation:	Unconjugated
Storage:	For short term use, store at 2-8°C up to 1 week. For long term storage, store at -20°C in small aliquots to prevent freeze-thaw cycles.
Stability:	Shelf life: one year from despatch.
Predicted Protein Size:	38kDa
Gene Name:	protein interacting with cyclin A1
Database Link:	NP_689678 Entrez Gene 147011 Human Q8NCQ7-2
Background:	The specific function of this protein remains unknown.
Synonyms:	MGC39650
Protein Families:	Druggable Genome



[View online »](#)

Product images:



WB Suggested Anti-PROCA1 Antibody
Titration: 1.0 ug/ml
Positive Control: ACHN Whole Cell