

Product datasheet for **TA357078**

PAQR4 Rabbit Polyclonal Antibody

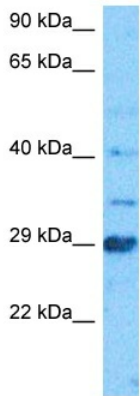
Product data:

Product Type:	Primary Antibodies
Applications:	WB
Reactivity:	Human
Host:	Rabbit
Clonality:	Polyclonal
Immunogen:	The immunogen is a synthetic peptide directed towards the C terminal region of human PAQR4
Specificity:	Expected reactivity: Human Homology: Cow: 93%; Dog: 100%; Guinea Pig: 100%; Human: 100%; Mouse: 100%; Rabbit: 93%; Rat: 100%
Formulation:	Liquid. Purified antibody supplied in 1x PBS buffer with 0.09% (w/v) sodium azide and 2% sucrose. <i>Note that this product is shipped as lyophilized powder to China customers.</i>
Concentration:	lot specific
Purification:	Affinity purified
Conjugation:	Unconjugated
Storage:	For short term use, store at 2-8°C up to 1 week. For long term storage, store at -20°C in small aliquots to prevent freeze-thaw cycles.
Stability:	Shelf life: one year from despatch.
Predicted Protein Size:	30 kDa
Gene Name:	progesterone and adiponectin receptor family member 4
Database Link:	NP_001271440.1 Entrez Gene 124222 Human Q8N4S7
Synonyms:	FLJ30002
Protein Families:	Druggable Genome, Transmembrane



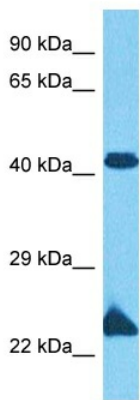
[View online »](#)

Product images:



Host: Rabbit
 Target Name: PAQR4
 Sample Type: Lymph Node Tumor Lysate
 Antibody Dilution: 1.0µg/ml

Host: Rabbit
 Target Name: PAQR4
 Sample Tissue: Human Lymph Node Tumor lysates
 Antibody Dilution: 1 ug/ml



Host: Rabbit
 Target Name: PAQR4
 Sample Type: MCF7 Cell Lysate
 Antibody Dilution: 1.0µg/ml

Host: Rabbit
 Target Name: PAQR4
 Sample Tissue: Human MCF7 Whole Cell
 Antibody Dilution: 3ug/ml