

## Product datasheet for **TA357072**

### SPATA18 Rabbit Polyclonal Antibody

#### Product data:

Product Type:	Primary Antibodies
Applications:	WB
Reactivity:	Human
Host:	Rabbit
Clonality:	Polyclonal
Immunogen:	The immunogen is a synthetic peptide directed towards the middle region of human SPATA18
Specificity:	<b>Expected reactivity:</b> Human <b>Homology:</b> Cow: 77%; Horse: 100%; Human: 100%; Mouse: 100%; Rat: 100%
Formulation:	Liquid. Purified antibody supplied in 1x PBS buffer with 0.09% (w/v) sodium azide and 2% sucrose. <i>Note that this product is shipped as lyophilized powder to China customers.</i>
Concentration:	lot specific
Purification:	Affinity purified
Conjugation:	Unconjugated
Storage:	For short term use, store at 2-8°C up to 1 week. For long term storage, store at -20°C in small aliquots to prevent freeze-thaw cycles.
Stability:	Shelf life: one year from despatch.
Predicted Protein Size:	55 kDa
Gene Name:	spermatogenesis associated 18
Database Link:	<a href="#">NP_001284537.1</a> <a href="#">Entrez Gene 132671 Human</a> <a href="#">Q8TC71-2</a>



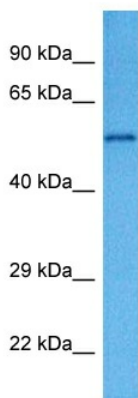
[View online »](#)

**Background:**

Key regulator of mitochondrial quality that mediates the repairing or degradation of unhealthy mitochondria in response to mitochondrial damage. Mediator of mitochondrial protein catabolic process (also named MALM) by mediating the degradation of damaged proteins inside mitochondria by promoting the accumulation in the mitochondrial matrix of hydrolases that are characteristic of the lysosomal lumen. Also involved in mitochondrion degradation of damaged mitochondria by promoting the formation of vacuole-like structures (named MIV), which engulf and degrade unhealthy mitochondria by accumulating lysosomes. The physical interaction of SPATA18/MIEAP, BNIP3 and BNIP3L/NIX at the mitochondrial outer membrane regulates the opening of a pore in the mitochondrial double membrane in order to mediate the translocation of lysosomal proteins from the cytoplasm to the mitochondrial matrix.

**Synonyms:**

FLJ32906; SPETEX1

**Product images:**

Host: Rabbit  
Target Name: SPATA18  
Sample Type: HT1080 Cell Lysate  
Antibody Dilution: 1.0µg/ml

Host: Rabbit  
Target Name: SPATA18  
Sample Tissue: Human HT1080 Whole Cell lysates  
Antibody Dilution: 1ug/ml