

Product datasheet for **TA357071**

SPATA5 Rabbit Polyclonal Antibody

Product data:

Product Type:	Primary Antibodies
Applications:	WB
Reactivity:	Human
Host:	Rabbit
Clonality:	Polyclonal
Immunogen:	The immunogen is a synthetic peptide directed towards the C terminal region of human SPATA5
Specificity:	Expected reactivity: Human Homology: Cow: 93%; Dog: 93%; Guinea Pig: 100%; Horse: 93%; Human: 100%; Mouse: 100%; Rabbit: 86%; Rat: 100%; Zebrafish: 86%
Formulation:	Liquid. Purified antibody supplied in 1x PBS buffer with 0.09% (w/v) sodium azide and 2% sucrose.
Concentration:	lot specific
Purification:	Affinity purified
Conjugation:	Unconjugated
Storage:	For short term use, store at 2-8°C up to 1 week. For long term storage, store at -20°C in small aliquots to prevent freeze-thaw cycles.
Stability:	Shelf life: one year from despatch.
Predicted Protein Size:	76 kDa
Gene Name:	spermatogenesis associated 5
Database Link:	NP_660208.2 Entrez Gene 166378 Human Q8NB90-3



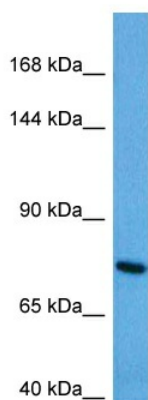
[View online »](#)

Background:

This gene encodes a member of the ATPase associated with diverse activities family, whose members are defined by a highly conserved ATPase domain. Members of this family participate in diverse cellular processes that include membrane fusion, DNA replication, microtubule severing, and protein degradation. The protein encoded by this gene has a putative mitochondrial targeting sequence and has been proposed to function in maintenance of mitochondrial function and integrity during mouse spermatogenesis. Allelic variants in this gene have been associated with epilepsy, hearing loss, and cognitive disability syndrome. Alternative splicing results in multiple transcript variants.

Synonyms:

AFG2; SPAF

Product images:


Host: Rabbit

Target Name: SPATA5

Sample Type: Jurkat Cell Lysate

Antibody Dilution: 1.0µg/ml

Host: Rabbit

Target Name: SPATA5

Sample Tissue: Human Jurkat Whole Cell lysates

Antibody Dilution: 1ug/ml