

Product datasheet for **TA357067**

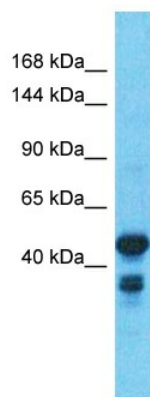
CFAP251 Rabbit Polyclonal Antibody

Product data:

Product Type:	Primary Antibodies
Applications:	WB
Reactivity:	Human
Host:	Rabbit
Clonality:	Polyclonal
Immunogen:	The immunogen is a synthetic peptide directed towards the middle region of Human WDR66
Specificity:	Expected reactivity: Human, Zebrafish Homology: Human: 100%; Zebrafish: 83%
Formulation:	Liquid. Purified antibody supplied in 1x PBS buffer with 0.09% (w/v) sodium azide and 2% sucrose. <i>Note that this product is shipped as lyophilized powder to China customers.</i>
Concentration:	lot specific
Purification:	Affinity Purified
Conjugation:	Unconjugated
Storage:	For short term use, store at 2-8°C up to 1 week. For long term storage, store at -20°C in small aliquots to prevent freeze-thaw cycles.
Stability:	Shelf life: one year from despatch.
Predicted Protein Size:	40kDa
Gene Name:	WD repeat domain 66
Database Link:	Entrez Gene 144406 Human Q8TBY9-3
Background:	This protein encoded by this gene belongs to the WD repeat-containing family of proteins, which function in the formation of protein-protein complexes in a variety of biological pathways. This family member appears to function in the determination of mean platelet volume (MPV), and polymorphisms in this gene have been associated with variance in MPV. Alternative splicing of this gene results in multiple transcript variants.
Synonyms:	FLJ39783; MGC33630



[View online »](#)

Product images:

168 kDa__

144 kDa__

90 kDa__

65 kDa__

40 kDa__

Host: Rabbit

Target Name: WDR66

Sample Tissue: Colonrectol Tumor Lysate

Antibody Dilution: 1.0µg/ml

Host: Rabbit

Target Name: WDR66

Sample Type: Colonrectol Tumor lysates

Antibody Dilution: 1.0ug/ml