

Product datasheet for **TA357062**

PABIR3 Rabbit Polyclonal Antibody

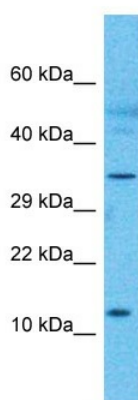
Product data:

Product Type:	Primary Antibodies
Applications:	WB
Reactivity:	Human
Host:	Rabbit
Clonality:	Polyclonal
Immunogen:	The immunogen is a synthetic peptide directed towards the N-terminal region of human FAM122C
Specificity:	Expected reactivity: Cow, Dog, Guinea Pig, Horse, Human, Mouse, Pig, Rabbit, Rat Homology: Cow: 83%; Dog: 92%; Guinea Pig: 83%; Horse: 83%; Human: 100%; Mouse: 83%; Pig: 85%; Rabbit: 83%; Rat: 83%
Formulation:	Liquid. Purified antibody supplied in 1x PBS buffer with 0.09% (w/v) sodium azide and 2% sucrose.
Concentration:	lot specific
Purification:	Affinity Purified
Conjugation:	Unconjugated
Storage:	For short term use, store at 2-8°C up to 1 week. For long term storage, store at -20°C in small aliquots to prevent freeze-thaw cycles.
Stability:	Shelf life: one year from despatch.
Predicted Protein Size:	33kDa
Gene Name:	family with sequence similarity 122C
Database Link:	XP_005262439.1 Entrez Gene 159091 Human D3DTG4
Synonyms:	RP3-473B4.1



[View online »](#)

Product images:



Host: Rabbit
Target Name: RP3-473B4.1
Sample Type: Pancreas Tumor lysates
Antibody Dilution: 1.0ug/ml