

## Product datasheet for **TA357061**

### SPATA17 Rabbit Polyclonal Antibody

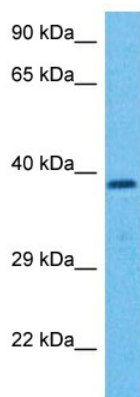
#### Product data:

Product Type:	Primary Antibodies
Applications:	WB
Reactivity:	Human
Host:	Rabbit
Clonality:	Polyclonal
Immunogen:	The immunogen for Anti-SPATA17 antibody is: synthetic peptide directed towards the N-terminal region of Human SPT17
Specificity:	<b>Expected reactivity:</b> Horse, Human <b>Homology:</b> Horse: 79%; Human: 100%
Formulation:	Liquid. Purified antibody supplied in 1x PBS buffer with 0.09% (w/v) sodium azide and 2% sucrose. <i>Note that this product is shipped as lyophilized powder to China customers.</i>
Concentration:	lot specific
Purification:	Affinity purified
Conjugation:	Unconjugated
Storage:	For short term use, store at 2-8°C up to 1 week. For long term storage, store at -20°C in small aliquots to prevent freeze-thaw cycles.
Stability:	Shelf life: one year from despatch.
Predicted Protein Size:	39 kDa
Gene Name:	spermatogenesis associated 17
Database Link:	<a href="#">XP_005273109.1</a> <a href="#">Entrez Gene 128153 Human</a> <a href="#">Q96L03</a>
Synonyms:	IQCH; MSRG-11; MSRG11; RP11-144C20.1



[View online »](#)

## Product images:



Host: Rabbit  
Target Name: SPT17  
Sample Tissue: ACHN Cell Lysate  
Antibody Dilution: 1.0µg/ml

WB Suggested Anti-SPT17 antibody Titration: 1  
ug/mL  
Sample Type: Human ACHN Whole Cell