

Product datasheet for **TA357058**

MAGEE2 Rabbit Polyclonal Antibody

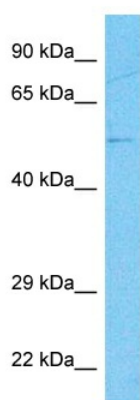
Product data:

Product Type:	Primary Antibodies
Applications:	WB
Reactivity:	Human
Host:	Rabbit
Clonality:	Polyclonal
Immunogen:	The immunogen is a synthetic peptide directed towards the middle region of Human MAGE2
Specificity:	Expected reactivity: Cow, Dog, Horse, Human, Mouse, Rat Homology: Cow: 93%; Dog: 100%; Horse: 100%; Human: 100%; Mouse: 100%; Rat: 100%
Formulation:	Liquid. Purified antibody supplied in 1x PBS buffer with 0.09% (w/v) sodium azide and 2% sucrose. <i>Note that this product is shipped as lyophilized powder to China customers.</i>
Concentration:	lot specific
Purification:	Affinity purified
Conjugation:	Unconjugated
Storage:	For short term use, store at 2-8°C up to 1 week. For long term storage, store at -20°C in small aliquots to prevent freeze-thaw cycles.
Stability:	Shelf life: one year from despatch.
Predicted Protein Size:	57kDa
Gene Name:	MAGE family member E2
Database Link:	NP_619648 Entrez Gene 139599 Human Q8TD90
Background:	This gene encodes a member of the E subfamily of MAGE (melanoma antigen-encoding gene) gene family. The gene is intronless and the encoded protein has two of the MAGE domains which are characteristic of MAGE family proteins.
Synonyms:	HCA3; MGC138154



[View online »](#)

Product images:



Host: Rabbit
Target Name: MAGE2
Sample Tissue: ACHN Cell Lysate
Antibody Dilution: 1.0 μ g/ml

Host: Rabbit
Target Name: MAGE2
Sample Type: ACHN Whole Cell lysates
Antibody Dilution: 1.0ug/ml