

Product datasheet for **TA357057**

ALS2CR15 (ICA1L) Rabbit Polyclonal Antibody

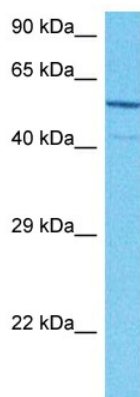
Product data:

Product Type:	Primary Antibodies
Applications:	WB
Reactivity:	Human
Host:	Rabbit
Clonality:	Polyclonal
Immunogen:	The immunogen is a synthetic peptide directed towards the middle region of Human ICA1L
Specificity:	Expected reactivity: Cow, Dog, Guinea Pig, Horse, Human, Mouse, Pig, Rabbit, Rat Homology: Cow: 93%; Dog: 100%; Guinea Pig: 92%; Horse: 93%; Human: 100%; Mouse: 100%; Pig: 93%; Rabbit: 93%; Rat: 93%
Formulation:	Liquid. Purified antibody supplied in 1x PBS buffer with 0.09% (w/v) sodium azide and 2% sucrose. <i>Note that this product is shipped as lyophilized powder to China customers.</i>
Concentration:	lot specific
Purification:	Affinity purified
Conjugation:	Unconjugated
Storage:	For short term use, store at 2-8°C up to 1 week. For long term storage, store at -20°C in small aliquots to prevent freeze-thaw cycles.
Stability:	Shelf life: one year from despatch.
Predicted Protein Size:	53kDa
Gene Name:	islet cell autoantigen 1 like
Database Link:	NP_612477 Entrez Gene 130026 Human Q8NDH6
Background:	The function of this protein remains unknown.
Synonyms:	ALS2CR14; ALS2CR15; DKFZp434E1919; MGC138440; OTTHUMP00000206073



[View online »](#)

Product images:



Host: Rabbit
Target Name: ICA1L
Sample Tissue: NCI-H226 Cell Lysate
Antibody Dilution: 1.0 μ g/ml

Host: Rabbit
Target Name: ICA1L
Sample Type: NCI-H226 Whole Cell lysates
Antibody Dilution: 1.0 μ g/ml