

## Product datasheet for **TA357054**

### **BNIPL Rabbit Polyclonal Antibody**

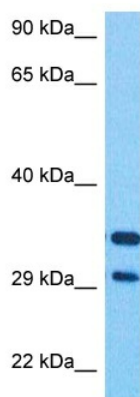
#### **Product data:**

Product Type:	Primary Antibodies
Applications:	WB
Reactivity:	Human
Host:	Rabbit
Clonality:	Polyclonal
Immunogen:	The immunogen is a synthetic peptide directed towards the C terminal region of human BNIPL
Specificity:	<b>Expected reactivity:</b> Human <b>Homology:</b> Cow: 100%; Dog: 93%; Guinea Pig: 92%; Horse: 100%; Human: 100%; Mouse: 100%; Pig: 100%; Rabbit: 100%; Rat: 100%; Zebrafish: 91%
Formulation:	Liquid. Purified antibody supplied in 1x PBS buffer with 0.09% (w/v) sodium azide and 2% sucrose.
Concentration:	lot specific
Purification:	Affinity purified
Conjugation:	Unconjugated
Storage:	For short term use, store at 2-8°C up to 1 week. For long term storage, store at -20°C in small aliquots to prevent freeze-thaw cycles.
Stability:	Shelf life: one year from despatch.
Predicted Protein Size:	30 kDa
Gene Name:	BCL2/adenovirus E1B 19kD interacting protein like
Database Link:	<a href="#">NP_001153114.1</a> <a href="#">Entrez Gene 149428 Human</a> <a href="#">Q7Z465-2</a>
Background:	The protein encoded by this gene interacts with several other proteins, such as BCL2, ARHGAP1, MIF and GFER. It may function as a bridge molecule between BCL2 and ARHGAP1/CDC42 in promoting cell death. Alternatively spliced transcript variants encoding different isoforms have been described for this gene.
Synonyms:	BNIP-S; BNIPL-1; BNIPL-2; PP753



[View online »](#)

## Product images:



Host: Rabbit  
Target Name: BNIPL  
Sample Type: Stomach Tumor Lysate  
Antibody Dilution: 1.0 µg/ml

Host: Rabbit  
Target Name: BNIPL  
Sample Tissue: Human Stomach Tumor lysates  
Antibody Dilution: 1 µg/ml