

## Product datasheet for **TA357048**

### C1qtnf2 Rabbit Polyclonal Antibody

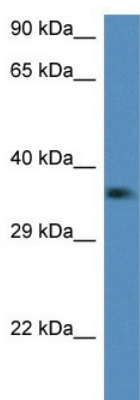
#### Product data:

|                         |  |
|-------------------------|--|
| Product Type:           | Primary Antibodies   |
| Applications:           | WB   |
| Reactivity:             | Mouse  |
| Host:                   | Rabbit   |
| Clonality:              | Polyclonal   |
| Specificity:            | <b>Expected reactivity:</b> Cow, Dog, Guinea Pig, Horse, Human, Mouse, Rabbit, Rat<br><b>Homology:</b> Cow: 100%; Dog: 100%; Guinea Pig: 100%; Horse: 100%; Human: 100%; Mouse: 100%; Rabbit: 93%; Rat: 100% |
| Formulation:            | Liquid. Purified antibody supplied in 1x PBS buffer with 0.09% (w/v) sodium azide and 2% sucrose.<br><i>Note that this product is shipped as lyophilized powder to China customers.</i>                      |
| Concentration:          | lot specific   |
| Purification:           | Affinity Purified  |
| Conjugation:            | Unconjugated   |
| Storage:                | For short term use, store at 2-8°C up to 1 week. For long term storage, store at -20°C in small aliquots to prevent freeze-thaw cycles.  |
| Stability:              | Shelf life: one year from despatch.  |
| Predicted Protein Size: | 32kDa  |
| Gene Name:              | C1q and tumor necrosis factor related protein 2  |
| Database Link:          | <a href="#">NP_081255</a><br><a href="#">Entrez Gene 69183 Mouse</a><br><a href="#">Q9D8U4</a>   |
| Background:             | The function of this protein remains unknown.  |
| Synonyms:               | CTRP2; zacrp2  |



[View online »](#)

## Product images:



WB Suggested Anti-C1qtnf2 Antibody  
Titration: 1.0 ug/ml  
Positive Control: Mouse Kidney