

Product datasheet for **TA357037**

ATP dependent metalloprotease YME1L1 (YME1L1) Rabbit Polyclonal Antibody

Product data:

Product Type:	Primary Antibodies
Applications:	WB
Reactivity:	Human
Host:	Rabbit
Clonality:	Polyclonal
Immunogen:	The immunogen is a synthetic peptide directed towards the C-terminal region of human YME1L1
Specificity:	Expected reactivity: Cow, Dog, Horse, Human, Mouse, Pig, Rabbit, Rat Homology: Cow: 100%; Dog: 100%; Horse: 100%; Human: 100%; Mouse: 100%; Pig: 100%; Rabbit: 100%; Rat: 100%
Formulation:	Liquid. Purified antibody supplied in 1x PBS buffer with 0.09% (w/v) sodium azide and 2% sucrose. <i>Note that this product is shipped as lyophilized powder to China customers.</i>
Concentration:	lot specific
Purification:	Affinity Purified
Conjugation:	Unconjugated
Storage:	For short term use, store at 2-8°C up to 1 week. For long term storage, store at -20°C in small aliquots to prevent freeze-thaw cycles.
Stability:	Shelf life: one year from despatch.
Predicted Protein Size:	56kDa
Gene Name:	YME1 like 1 ATPase
Database Link:	NP_001240795.1 Entrez Gene 10730 Human Q96TA2



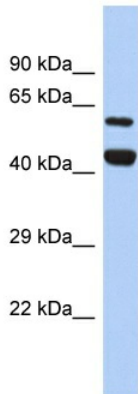
[View online »](#)

Background: The protein encoded by this gene is the human ortholog of yeast mitochondrial AAA metalloprotease, Yme1p. It is localized in the mitochondria and can functionally complement a yme1 disruptant yeast strain. It is proposed that this gene plays a role in mitochondrial protein metabolism and could be involved in mitochondrial pathologies. Three transcript variants encoding different isoforms have been found for this gene.

Synonyms: FTSH; FTSH1; Meg-4; MEG4; PAMP; YME1L

Protein Families: Druggable Genome, Protease

Product images:



Host: Rabbit
Target Name: FTSH
Sample Tissue: SH-SY5Y Cell Lysate
Antibody Dilution: 1.0 μ g/ml

Host: Rabbit
Target Name: FTSH
Sample Type: SH-SY5Y Whole cell lysates
Antibody Dilution: 1.0 μ g/ml