

Product datasheet for **TA357033**

MgII Rabbit Polyclonal Antibody

Product data:

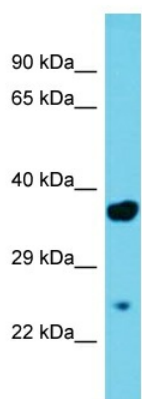
Product Type:	Primary Antibodies
Applications:	WB
Reactivity:	Rat
Host:	Rabbit
Clonality:	Polyclonal
Immunogen:	The immunogen is a synthetic peptide directed towards the middle region of RAT MgII
Specificity:	Expected reactivity: Dog, Guinea Pig, Horse, Human, Mouse, Pig, Rabbit, Rat Homology: Dog: 86%; Guinea Pig: 86%; Horse: 86%; Human: 100%; Mouse: 86%; Pig: 93%; Rabbit: 93%; Rat: 86%
Formulation:	Liquid. Purified antibody supplied in 1x PBS buffer with 0.09% (w/v) sodium azide and 2% sucrose. <i>Note that this product is shipped as lyophilized powder to China customers.</i>
Concentration:	lot specific
Purification:	Affinity Purified
Conjugation:	Unconjugated
Storage:	For short term use, store at 2-8°C up to 1 week. For long term storage, store at -20°C in small aliquots to prevent freeze-thaw cycles.
Stability:	Shelf life: one year from despatch.
Predicted Protein Size:	33kDa
Gene Name:	monoglyceride lipase
Database Link:	NP_612511 Entrez Gene 29254 Rat Q8R431
Background:	MgII converts monoacylglycerides to free fatty acids and glycerol. MgII hydrolyzes the endocannabinoid 2-arachidonoylglycerol, and thereby contributes to the regulation of endocannabinoid signaling, nociception and perception of pain. It regulates the levels of fatty acids that serve as signaling molecules and promote cancer cell migration, invasion and tumor growth.



[View online »](#)

Synonyms: HU-K5; HUK5; Lysophospholipase-like; MGL

Product images:



Host: Rabbit
Target Name: MgII
Sample Tissue: Rat Pancreas Lysate
Antibody Dilution: 1.0 μ g/ml

Host: Rabbit
Target Name: MgII
Sample Type: Rat Pancreas lysates
Antibody Dilution: 1.0 μ g/ml