

Product datasheet for TA357032

Kera Rabbit Polyclonal Antibody

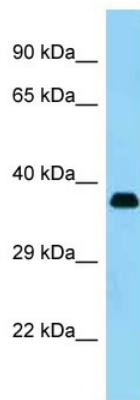
Product data:

Product Type:	Primary Antibodies
Applications:	WB
Reactivity:	Mouse
Host:	Rabbit
Clonality:	Polyclonal
Specificity:	Expected reactivity: Cow, Dog, Goat, Guinea Pig, Horse, Human, Mouse, Pig, Rabbit, Rat Homology: Cow: 93%; Dog: 100%; Goat: 80%; Guinea Pig: 93%; Horse: 93%; Human: 100%; Mouse: 100%; Pig: 100%; Rabbit: 100%; Rat: 100%
Formulation:	Liquid. Purified antibody supplied in 1x PBS buffer with 0.09% (w/v) sodium azide and 2% sucrose.
Concentration:	lot specific
Purification:	Affinity Purified
Conjugation:	Unconjugated
Storage:	For short term use, store at 2-8°C up to 1 week. For long term storage, store at -20°C in small aliquots to prevent freeze-thaw cycles.
Stability:	Shelf life: one year from despatch.
Predicted Protein Size:	39kDa
Gene Name:	keratocan
Database Link:	NP_032464 Entrez Gene 16545 Mouse O35367
Background:	Kera may be important in developing and maintaining corneal transparency and for the structure of the stromal matrix.
Synonyms:	CNA2; keratocan; KTN; SLRR2B

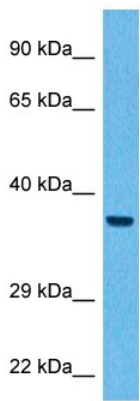


[View online »](#)

Product images:



WB Suggested Anti-Kera Antibody
Titration: 1.0 ug/ml
Positive Control: Mouse Small Intestine



Host: Rabbit
Target Name: KERA
Sample Type: Mouse Liver Lysate
Antibody Dilution: 1.0µg/ml

Host: Rabbit
Target Name: KERA
Sample Tissue: Mouse Liver
Antibody Dilution: 3ug/ml