

## Product datasheet for **TA357026**

### Hsph1 Rabbit Polyclonal Antibody

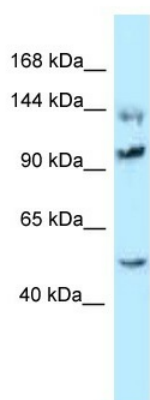
#### Product data:

Product Type:	Primary Antibodies
Applications:	WB
Reactivity:	Rat
Host:	Rabbit
Clonality:	Polyclonal
Specificity:	<b>Expected reactivity:</b> Cow, Dog, Guinea Pig, Horse, Human, Mouse, Rabbit, Rat <b>Homology:</b> Cow: 86%; Dog: 100%; Guinea Pig: 100%; Horse: 93%; Human: 100%; Mouse: 100%; Rabbit: 93%; Rat: 100%
Formulation:	Liquid. Purified antibody supplied in 1x PBS buffer with 0.09% (w/v) sodium azide and 2% sucrose. <i>Note that this product is shipped as lyophilized powder to China customers.</i>
Concentration:	lot specific
Purification:	Affinity Purified
Conjugation:	Unconjugated
Storage:	For short term use, store at 2-8°C up to 1 week. For long term storage, store at -20°C in small aliquots to prevent freeze-thaw cycles.
Stability:	Shelf life: one year from despatch.
Predicted Protein Size:	94kDa
Gene Name:	heat shock protein family H (Hsp110) member 1
Database Link:	<a href="#">NP_001011901</a> <a href="#">Entrez Gene 288444 Rat</a> <a href="#">Q66HA8</a>
Background:	Hsph1 prevents the aggregation of denatured proteins in cells under severe stress, on which the ATP levels decrease markedly. It inhibits HSPA8/HSC70 ATPase and chaperone activities.
Synonyms:	DKFZp686M05240; HSP105; HSP105A; HSP105B; HSP110; KIAA0201; NY-CO-25



[View online »](#)

Product images:



WB Suggested Anti-Hsph1 Antibody  
Titration: 1.0 ug/ml  
Positive Control: Rat Brain