

Product datasheet for **TA357025**

PLK2 Rabbit Polyclonal Antibody

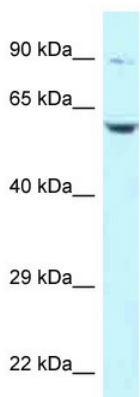
Product data:

Product Type:	Primary Antibodies
Applications:	IHC, WB
Reactivity:	Human, Rat
Host:	Rabbit
Clonality:	Polyclonal
Specificity:	Expected reactivity: Cow, Dog, Guinea Pig, Horse, Human, Mouse, Rabbit, Rat, Zebrafish Homology: Cow: 100%; Dog: 100%; Guinea Pig: 100%; Horse: 100%; Human: 100%; Mouse: 100%; Rabbit: 100%; Rat: 100%; Zebrafish: 100%
Formulation:	Liquid. Purified antibody supplied in 1x PBS buffer with 0.09% (w/v) sodium azide and 2% sucrose. <i>Note that this product is shipped as lyophilized powder to China customers.</i>
Concentration:	lot specific
Purification:	Affinity Purified
Conjugation:	Unconjugated
Storage:	For short term use, store at 2-8°C up to 1 week. For long term storage, store at -20°C in small aliquots to prevent freeze-thaw cycles.
Stability:	Shelf life: one year from despatch.
Predicted Protein Size:	78kDa
Gene Name:	polo like kinase 2
Database Link:	NP_006613 Entrez Gene 83722 Rat Entrez Gene 10769 Human Q9NYY3
Background:	Serum-inducible kinase is a member of the 'polo' family of serine/threonine protein kinases that have a role in normal cell division.
Synonyms:	PLK-2; SNK
Protein Families:	Druggable Genome, Protein Kinase



[View online »](#)

Product images:



WB Suggested Anti-PLK2 Antibody
Titration: 1.0 ug/ml
Positive Control: Jurkat Whole Cell



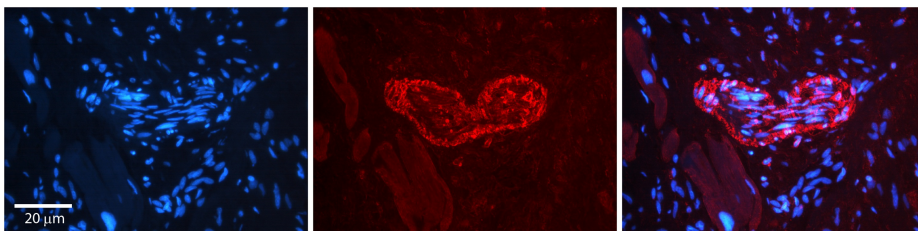
Host: Rabbit
Target Name: Plk2
Sample Type: Rat Skeletal Muscle Lysate
Antibody Dilution: 1.0µg/ml

Host: Rabbit
Target Name: PLK2
Sample Tissue: Rat Skeletal Muscle
Antibody Dilution: 1 ug/ml



Host: Rabbit
 Target Name: Plk2
 Sample Type: Rat Skeletal Muscle Lysate
 Antibody Dilution: 1.0µg/ml

Host: Rat
 Target Name: PLK2
 Sample Tissue: Rat Skeletal Muscle
 Antibody Dilution: 1ug/ml



Rabbit Anti-PLK2 Antibody
 Catalog Number: TA357025
 Formalin Fixed Paraffin Embedded Tissue:
 Human heart Tissue
 Observed Staining: Cytoplasmic in endothelial
 cells in blood vessels
 Primary Antibody Concentration: N/A
 Other Working Concentrations: 1:600
 Secondary Antibody: Donkey anti-Rabbit-Cy3
 Secondary Antibody Concentration: 1:200
 Magnification: 20X
 Exposure Time: 0.5–2.0 sec