

Product datasheet for **TA357024**

Grp Rabbit Polyclonal Antibody

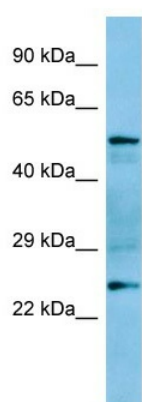
Product data:

Product Type:	Primary Antibodies
Applications:	WB
Reactivity:	Rat
Host:	Rabbit
Clonality:	Polyclonal
Specificity:	Expected reactivity: Cow, Dog, Goat, Guinea Pig, Horse, Human, Mouse, Rabbit, Rat, Zebrafish Homology: Cow: 86%; Dog: 100%; Goat: 75%; Guinea Pig: 100%; Horse: 100%; Human: 100%; Mouse: 100%; Rabbit: 100%; Rat: 100%; Zebrafish: 79%
Formulation:	Liquid. Purified antibody supplied in 1x PBS buffer with 0.09% (w/v) sodium azide and 2% sucrose. <i>Note that this product is shipped as lyophilized powder to China customers.</i>
Concentration:	lot specific
Purification:	Affinity Purified
Conjugation:	Unconjugated
Storage:	For short term use, store at 2-8°C up to 1 week. For long term storage, store at -20°C in small aliquots to prevent freeze-thaw cycles.
Stability:	Shelf life: one year from despatch.
Predicted Protein Size:	23kDa
Gene Name:	GRB2-related adaptor protein
Database Link:	NP_001020920 Entrez Gene 363616 Rat Q4KM68
Background:	The function of this protein remains unknown.
Synonyms:	8430435N19Rik; BB233594; MGC112733



[View online »](#)

Product images:



Host: Rabbit
Target Name: Grp
Antibody Dilution: 1.0ug/ml
Sample Type: Rat Spleen