

Product datasheet for **TA357022**

CGREF1 Rabbit Polyclonal Antibody

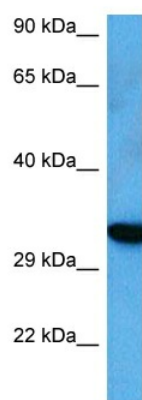
Product data:

Product Type:	Primary Antibodies
Applications:	WB
Reactivity:	Human
Host:	Rabbit
Clonality:	Polyclonal
Immunogen:	The immunogen is a synthetic peptide directed towards the C terminal region of human CGREF1
Specificity:	Expected reactivity: Human Homology: Human: 100%
Formulation:	Liquid. Purified antibody supplied in 1x PBS buffer with 0.09% (w/v) sodium azide and 2% sucrose. <i>Note that this product is shipped as lyophilized powder to China customers.</i>
Concentration:	lot specific
Purification:	Affinity purified
Conjugation:	Unconjugated
Storage:	For short term use, store at 2-8°C up to 1 week. For long term storage, store at -20°C in small aliquots to prevent freeze-thaw cycles.
Stability:	Shelf life: one year from despatch.
Predicted Protein Size:	33 kDa
Gene Name:	cell growth regulator with EF-hand domain 1
Database Link:	AAH34764 Entrez Gene 10669 Human Q99674
Background:	Mediates cell-cell adhesion in a calcium-dependent manner. Able to inhibit growth in several cell lines.
Synonyms:	CGR11; Hydrophobestin



[View online »](#)

Product images:



Host: Rabbit
Target Name: CGREF1
Sample Type: A549 Cell Lysate
Antibody Dilution: 1.0 μ g/ml

Host: Rabbit
Target Name: CGREF1
Sample Tissue: Human A549 Whole Cell lysates
Antibody Dilution: 1 μ g/ml