

Product datasheet for **TA357018**

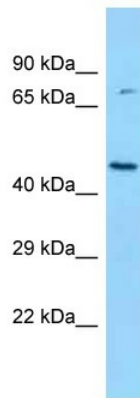
Bckdk Rabbit Polyclonal Antibody

Product data:

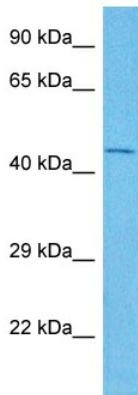
Product Type:	Primary Antibodies
Applications:	WB
Reactivity:	Rat
Host:	Rabbit
Clonality:	Polyclonal
Specificity:	Expected reactivity: Cow, Dog, Guinea Pig, Human, Mouse, Rabbit, Rat Homology: Cow: 100%; Dog: 100%; Guinea Pig: 100%; Human: 100%; Mouse: 100%; Rabbit: 100%; Rat: 93%
Formulation:	Liquid. Purified antibody supplied in 1x PBS buffer with 0.09% (w/v) sodium azide and 2% sucrose. <i>Note that this product is shipped as lyophilized powder to China customers.</i>
Concentration:	lot specific
Purification:	Affinity Purified
Conjugation:	Unconjugated
Storage:	For short term use, store at 2-8°C up to 1 week. For long term storage, store at -20°C in small aliquots to prevent freeze-thaw cycles.
Stability:	Shelf life: one year from despatch.
Predicted Protein Size:	45kDa
Gene Name:	branched chain ketoacid dehydrogenase kinase
Database Link:	NP_062117 Entrez Gene 29603 Rat Q00972
Background:	Bckdk is a mitochondrial kinase; It is involved in oxidative degradation of branched-chain amino acids.
Synonyms:	BCKD-kinase; BCKDHKIN; OTTHUMP00000044999



[View online »](#)

Product images:

WB Suggested Anti-Bckdk Antibody
Titration: 1.0 ug/ml
Positive Control: Rat Brain



Host: Rabbit
Target Name: BCKDK
Sample Type: Rat Pancreas Lysate
Antibody Dilution: 1.0µg/ml

Host: Rabbit
Target Name: BCKDK
Sample Tissue: Rat Rat Pancreas
Antibody Dilution: 6ug/ml