

## Product datasheet for **TA357017**

### HRSP12 (RIDA) Rabbit Polyclonal Antibody

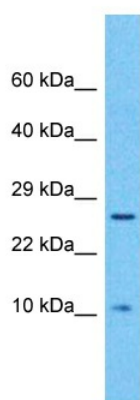
#### Product data:

Product Type:	Primary Antibodies
Applications:	WB
Reactivity:	Human
Host:	Rabbit
Clonality:	Polyclonal
Immunogen:	The immunogen is a synthetic peptide directed towards the C-terminal region of Human UK114
Specificity:	<b>Expected reactivity:</b> Cow, Dog, Goat, Guinea Pig, Horse, Human, Rabbit, Rat, Zebrafish <b>Homology:</b> Cow: 86%; Dog: 93%; Goat: 86%; Guinea Pig: 100%; Horse: 93%; Human: 100%; Rabbit: 100%; Rat: 100%; Zebrafish: 93%
Formulation:	Liquid. Purified antibody supplied in 1x PBS buffer with 0.09% (w/v) sodium azide and 2% sucrose. <i>Note that this product is shipped as lyophilized powder to China customers.</i>
Concentration:	lot specific
Purification:	Affinity Purified
Conjugation:	Unconjugated
Storage:	For short term use, store at 2-8°C up to 1 week. For long term storage, store at -20°C in small aliquots to prevent freeze-thaw cycles.
Stability:	Shelf life: one year from despatch.
Predicted Protein Size:	15kDa
Gene Name:	reactive intermediate imine deaminase A homolog
Database Link:	<a href="#">NP_005827</a> <a href="#">Entrez Gene 10247 Human</a> <a href="#">P52758</a>



[View online »](#)

Product images:



Host: Rabbit  
Target Name: UK114  
Sample Tissue: Lymph node tumor Lysate  
Antibody Dilution: 1.0µg/ml

Host: Rabbit  
Target Name: UK114  
Sample Type: Lymph node tumor lysates  
Antibody Dilution: 1.0ug/ml