

Product datasheet for **TA357016**

TOB (TOB1) Rabbit Polyclonal Antibody

Product data:

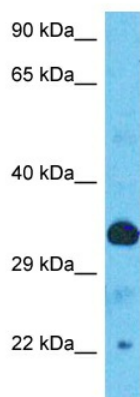
Product Type:	Primary Antibodies
Applications:	WB
Reactivity:	Human
Host:	Rabbit
Clonality:	Polyclonal
Immunogen:	The immunogen is a synthetic peptide directed towards the N-terminal region of Human TOB1
Specificity:	Expected reactivity: Cow, Dog, Guinea Pig, Horse, Human, Mouse, Rat, Zebrafish Homology: Cow: 100%; Dog: 100%; Guinea Pig: 100%; Horse: 100%; Human: 100%; Mouse: 100%; Rat: 100%; Zebrafish: 85%
Formulation:	Liquid. Purified antibody supplied in 1x PBS buffer with 0.09% (w/v) sodium azide and 2% sucrose. <i>Note that this product is shipped as lyophilized powder to China customers.</i>
Concentration:	lot specific
Purification:	Affinity Purified
Conjugation:	Unconjugated
Storage:	For short term use, store at 2-8°C up to 1 week. For long term storage, store at -20°C in small aliquots to prevent freeze-thaw cycles.
Stability:	Shelf life: one year from despatch.
Predicted Protein Size:	37kDa
Gene Name:	transducer of ERBB2, 1
Database Link:	NP_005740 Entrez Gene 10140 Human P50616
Background:	This gene encodes a member of the transducer of erbB-2 /B-cell translocation gene protein family. Members of this family are anti-proliferative factors that have the potential to regulate cell growth. The encoded protein may function as a tumor suppressor. Alternate splicing results in multiple transcript variants.



[View online »](#)

Synonyms: APRO6; MGC34446; MGC104792; PIG49; TOB; TROB; TROB1

Product images:



Host: Rabbit
Target Name: TOB1
Sample Tissue: Ovary Tumor Lysate
Antibody Dilution: 1.0 μ g/ml

Host: Rabbit
Target Name: TOB1
Sample Type: Ovary Tumor lysates
Antibody Dilution: 1.0 μ g/ml