

Product datasheet for **TA357008**

Cortactin (CTTN) Rabbit Polyclonal Antibody

Product data:

Product Type:	Primary Antibodies
Applications:	IHC, WB
Reactivity:	Human
Host:	Rabbit
Clonality:	Polyclonal
Immunogen:	The immunogen is a synthetic peptide directed towards the N terminal region of human CTTN
Specificity:	Expected reactivity: Cow, Dog, Guinea Pig, Horse, Human, Mouse, Rabbit, Rat, Zebrafish Homology: Cow: 100%; Dog: 100%; Guinea Pig: 100%; Horse: 100%; Human: 100%; Mouse: 100%; Rabbit: 100%; Rat: 100%; Zebrafish: 100%
Formulation:	Liquid. Purified antibody supplied in 1x PBS buffer with 0.09% (w/v) sodium azide and 2% sucrose. <i>Note that this product is shipped as lyophilized powder to China customers.</i>
Concentration:	lot specific
Purification:	Affinity Purified
Conjugation:	Unconjugated
Storage:	For short term use, store at 2-8°C up to 1 week. For long term storage, store at -20°C in small aliquots to prevent freeze-thaw cycles.
Stability:	Shelf life: one year from despatch.
Predicted Protein Size:	61kDa
Gene Name:	cortactin
Database Link:	NP_005222 Entrez Gene 2017 Human Q8N707



[View online »](#)

Background:

CTTN is overexpressed in breast cancer and squamous cell carcinomas of the head and neck. CTTN is localized in the cytoplasm and in areas of the cell-substratum contacts. It has two roles: (1) regulating the interactions between components of adherens-type junctions and (2) organizing the cytoskeleton and cell adhesion structures of epithelia and carcinoma cells. During apoptosis, CTTN is degraded in a caspase-dependent manner. The aberrant regulation of t CTTN contributes to tumor cell invasion and metastasis. This gene is overexpressed in breast cancer and squamous cell carcinomas of the head and neck. The encoded protein is localized in the cytoplasm and in areas of the cell-substratum contacts. This gene has two roles: (1) regulating the interactions between components of adherens-type junctions and (2) organizing the cytoskeleton and cell adhesion structures of epithelia and carcinoma cells. During apoptosis, the encoded protein is degraded in a caspase-dependent manner. The aberrant regulation of this gene contributes to tumor cell invasion and metastasis. Two splice variants that encode different isoforms have been identified for this gene.

Synonyms:

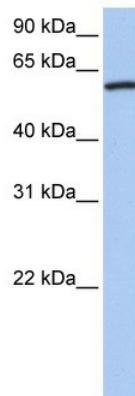
1110020L01Rik; Amplaxin; cortactin; EMS1; FLJ34459

Protein Families:

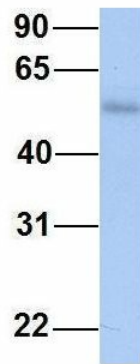
Druggable Genome

Protein Pathways:

Pathogenic Escherichia coli infection, Tight junction

Product images:

WB Suggested Anti-CTTN Antibody Titration: 0.2-1 ug/ml
Positive Control: Human brain

CTTN

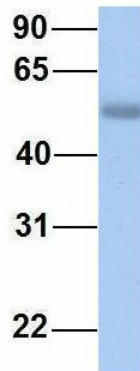
Rabbit Anti-CTTN
Sample Type: Human Fetal Muscle
Antibody Concentration: 1ug/mL

Host: Rabbit
Target Name: CTTN
Sample Type: Human Fetal Muscle
Antibody Dilution: 1.0ug/ml

CTTN

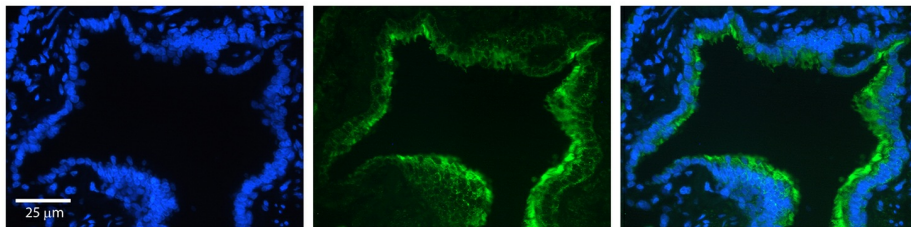
Rabbit Anti-CTTN
Sample Type: Human Fetal Liver
Antibody Concentration: 1ug/mL

Host: Rabbit
Target Name: CTTN
Sample Type: Human Fetal Liver
Antibody Dilution: 1.0ug/ml

CTTN

Rabbit Anti-CTTN
Sample Type: Human Fetal Lung
Antibody Concentration: 1ug/mL

Host: Rabbit
Target Name: CTTN
Sample Type: Human Fetal Lung
Antibody Dilution: 1.0ug/ml



CTTN antibody - N-terminal region (TA357008)
Catalog Number: TA357008
Formalin Fixed Paraffin Embedded Tissue:
Human Bronchial Epithelial Tissue
Observed Staining: Cytoplasm and membrane of
bronchial epithelial tissue
Primary Antibody Concentration: 1:600
Secondary Antibody: Donkey anti-Rabbit-Cy3
Secondary Antibody Concentration: 1:200
Magnification: 20X
Exposure Time: 0.5-2.0 sec