

Product datasheet for **TA357007**

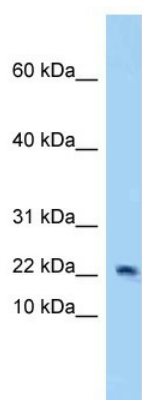
Eif4ebp2 Rabbit Polyclonal Antibody

Product data:

Product Type:	Primary Antibodies
Applications:	WB
Reactivity:	Mouse
Host:	Rabbit
Clonality:	Polyclonal
Specificity:	Expected reactivity: Cow, Dog, Goat, Guinea Pig, Human, Mouse, Pig, Rabbit, Rat, Zebrafish Homology: Cow: 100%; Dog: 100%; Goat: 79%; Guinea Pig: 92%; Human: 100%; Mouse: 100%; Pig: 100%; Rabbit: 100%; Rat: 100%; Zebrafish: 85%
Formulation:	Liquid. Purified antibody supplied in 1x PBS buffer with 0.09% (w/v) sodium azide and 2% sucrose. <i>Note that this product is shipped as lyophilized powder to China customers.</i>
Concentration:	lot specific
Purification:	Affinity Purified
Conjugation:	Unconjugated
Storage:	For short term use, store at 2-8°C up to 1 week. For long term storage, store at -20°C in small aliquots to prevent freeze-thaw cycles.
Stability:	Shelf life: one year from despatch.
Predicted Protein Size:	13kDa
Gene Name:	eukaryotic translation initiation factor 4E binding protein 2
Database Link:	NP_034254 Entrez Gene 13688 Mouse P70445
Background:	Eif4ebp2 regulates eIF4E activity by preventing its assembly into the eIF4F complex. It mediates the regulation of protein translation by hormones, growth factors and other stimuli that signal through the MAP kinase pathway.
Synonyms:	4E-BP2; 4EBP2; PHASII



[View online »](#)

Product images:

Eif4ebp2 antibody - N-terminal region (TA357007)
validated by WB using Mouse Heart lysate at
1ug/ml.