

## Product datasheet for **TA356997**

### ADPRH Rabbit Polyclonal Antibody

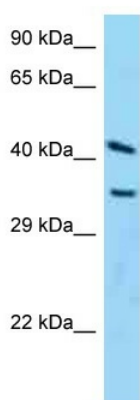
#### Product data:

Product Type:	Primary Antibodies
Applications:	WB
Reactivity:	Human
Host:	Rabbit
Clonality:	Polyclonal
Specificity:	<b>Expected reactivity:</b> Cow, Dog, Guinea Pig, Horse, Human, Mouse, Pig, Rabbit, Rat, Zebrafish <b>Homology:</b> Cow: 100%; Dog: 100%; Guinea Pig: 92%; Horse: 100%; Human: 100%; Mouse: 92%; Pig: 100%; Rabbit: 92%; Rat: 93%; Zebrafish: 75%
Formulation:	Liquid. Purified antibody supplied in 1x PBS buffer with 0.09% (w/v) sodium azide and 2% sucrose. <i>Note that this product is shipped as lyophilized powder to China customers.</i>
Concentration:	lot specific
Purification:	Affinity Purified
Conjugation:	Unconjugated
Storage:	For short term use, store at 2-8°C up to 1 week. For long term storage, store at -20°C in small aliquots to prevent freeze-thaw cycles.
Stability:	Shelf life: one year from despatch.
Predicted Protein Size:	39kDa
Gene Name:	ADP-ribosylarginine hydrolase
Database Link:	<a href="#">NP_001116</a> <a href="#">Entrez Gene 141 Human</a> <a href="#">P54922</a>
Background:	The enzyme encoded by this gene catalyzes removal of mono-ADP-ribose from arginine residues of proteins in the ADP-ribosylation cycle. Unlike the rat and mouse enzymes, which require DTT for maximal activity, the human enzyme is DTT-independent.
Synonyms:	ARH1



[View online »](#)

Product images:



WB Suggested Anti-ADPRH Antibody  
Titration: 1.0 ug/ml  
Positive Control: Hela Whole Cell