

## Product datasheet for TA356993

### MIA40 (CHCHD4) Rabbit Polyclonal Antibody

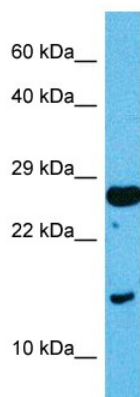
#### Product data:

Product Type:	Primary Antibodies
Applications:	WB
Reactivity:	Human
Host:	Rabbit
Clonality:	Polyclonal
Immunogen:	The immunogen is a synthetic peptide directed towards the C terminal region of human CHCHD4
Specificity:	<b>Expected reactivity:</b> Dog; Guinea Pig; Human; Mouse; Rat; Yeast; Zebrafish <b>Homology:</b> Dog: 79%; Guinea Pig: 91%; Human: 100%; Mouse: 85%; Rat: 85%; Yeast: 90%; Zebrafish: 100%
Formulation:	Liquid. Purified antibody supplied in 1x PBS buffer with 0.09% (w/v) sodium azide and 2% sucrose. <i>Note that this product is shipped as lyophilized powder to China customers.</i>
Concentration:	lot specific
Purification:	Affinity purified
Conjugation:	Unconjugated
Storage:	For short term use, store at 2-8°C up to 1 week. For long term storage, store at -20°C in small aliquots to prevent freeze-thaw cycles.
Stability:	Shelf life: one year from despatch.
Predicted Protein Size:	142
Gene Name:	coiled-coil-helix-coiled-coil-helix domain containing 4
Database Link:	<a href="#">NP_001091972.1</a> <a href="#">Entrez Gene 131474 Human</a> <a href="#">Q8N4Q1</a>
Background:	CHCHD4, a component of human mitochondria, belongs to a protein family whose members share 6 highly conserved cysteine residues constituting a -CXC-CX(9)C-CX(9)C- motif in the C terminus.
Synonyms:	FLJ31709; MIA40



[View online »](#)

## Product images:



Host: Rabbit  
Target Name: CHCHD4  
Sample Type: HepG2 Cell Lysate  
Antibody Dilution: 1.0 $\mu$ g/ml

Host: Rabbit  
Target Name: CHCHD4  
Sample Tissue: Human HepG2 Whole Cell lysates  
Antibody Dilution: 1  $\mu$ g/ml