

## Product datasheet for **TA356990**

### RPP38 Rabbit Polyclonal Antibody

#### Product data:

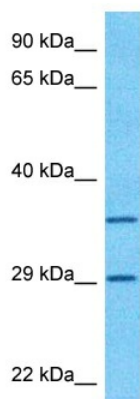
Product Type:	Primary Antibodies
Applications:	WB
Reactivity:	Human
Host:	Rabbit
Clonality:	Polyclonal
Immunogen:	The immunogen is a synthetic peptide directed towards the C-terminal region of Human RPP38
Specificity:	<b>Expected reactivity:</b> Cow, Dog, Guinea Pig, Horse, Human, Mouse, Rabbit, Rat <b>Homology:</b> Cow: 100%; Dog: 93%; Guinea Pig: 100%; Horse: 100%; Human: 100%; Mouse: 93%; Rabbit: 92%; Rat: 100%
Formulation:	Liquid. Purified antibody supplied in 1x PBS buffer with 0.09% (w/v) sodium azide and 2% sucrose. <i>Note that this product is shipped as lyophilized powder to China customers.</i>
Concentration:	lot specific
Purification:	Affinity purified
Conjugation:	Unconjugated
Storage:	For short term use, store at 2-8°C up to 1 week. For long term storage, store at -20°C in small aliquots to prevent freeze-thaw cycles.
Stability:	Shelf life: one year from despatch.
Predicted Protein Size:	31kDa
Gene Name:	ribonuclease P/MRP subunit p38
Database Link:	<a href="#">XP_006717427</a> <a href="#">Entrez Gene 10557 Human P78345</a>
Background:	RPP38 is a component of ribonuclease P, a protein complex that generates mature tRNA molecules by cleaving their 5'-ends. RPP38 may associate transiently with RNase P RNA as a factor involved in the transport of H1 RNA to the putative site of its assembly in the cell, the nucleolus.



[View online »](#)

Synonyms: OTTHUMP00000019202; RP11-455B2.5

### Product images:



Host: Rabbit  
Target Name: RPP38  
Sample Tissue: U937 Cell Lysate  
Antibody Dilution: 1.0 $\mu$ g/ml

Host: Rabbit  
Target Name: RPP38  
Sample Type: U937 Whole Cell lysates  
Antibody Dilution: 1.0 $\mu$ g/ml