

Product datasheet for **TA356984**

ADAL Rabbit Polyclonal Antibody

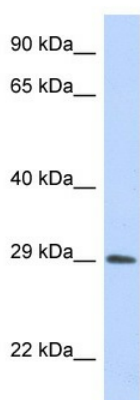
Product data:

Product Type:	Primary Antibodies
Applications:	WB
Reactivity:	Human
Host:	Rabbit
Clonality:	Polyclonal
Immunogen:	The immunogen is a synthetic peptide directed towards the C-terminal region of Human ADAL
Specificity:	Expected reactivity: Cow, Dog, Guinea Pig, Horse, Human, Mouse, Pig, Rabbit, Rat, Zebrafish Homology: Cow: 86%; Dog: 86%; Guinea Pig: 93%; Horse: 92%; Human: 100%; Mouse: 79%; Pig: 100%; Rabbit: 93%; Rat: 86%; Zebrafish: 100%
Formulation:	Liquid. Purified antibody supplied in 1x PBS buffer with 0.09% (w/v) sodium azide and 2% sucrose. <i>Note that this product is shipped as lyophilized powder to China customers.</i>
Concentration:	lot specific
Purification:	Affinity Purified
Conjugation:	Unconjugated
Storage:	For short term use, store at 2-8°C up to 1 week. For long term storage, store at -20°C in small aliquots to prevent freeze-thaw cycles.
Stability:	Shelf life: one year from despatch.
Predicted Protein Size:	29kDa
Gene Name:	adenosine deaminase-like
Database Link:	Entrez Gene 161823 Human Q6DHV7-2
Background:	ADAL is a putative nucleoside deaminase. It may catalyze the hydrolytic deamination of adenosine or some similar substrate and play a role in purine metabolism.
Synonyms:	DKFZp313B2137; FLJ44620



[View online »](#)

Product images:



Host: Rabbit
Target Name: ADAL
Sample Type: Transfected 293T Whole Cell lysates
Antibody Dilution: 1.0ug/ml