

Product datasheet for **TA356982**

C14orf174 (SAM15) Rabbit Polyclonal Antibody

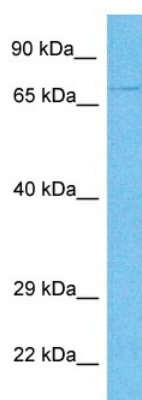
Product data:

Product Type:	Primary Antibodies
Applications:	WB
Reactivity:	Human
Host:	Rabbit
Clonality:	Polyclonal
Immunogen:	The immunogen is a synthetic peptide directed towards the N-terminal region of Human SAM15
Specificity:	Expected reactivity: Human, Yeast Homology: Human: 100%; Yeast: 79%
Formulation:	Liquid. Purified antibody supplied in 1x PBS buffer with 0.09% (w/v) sodium azide and 2% sucrose.
Concentration:	lot specific
Purification:	Affinity purified
Conjugation:	Unconjugated
Storage:	For short term use, store at 2-8°C up to 1 week. For long term storage, store at -20°C in small aliquots to prevent freeze-thaw cycles.
Stability:	Shelf life: one year from despatch.
Predicted Protein Size:	74kDa
Gene Name:	sterile alpha motif domain containing 15
Database Link:	NP_001010860 Entrez Gene 161394 Human Q9P1V8
Synonyms:	C14orf174; FAM15A



[View online »](#)

Product images:



Host: Rabbit
Target Name: SAM15
Sample Tissue: HT1080 Cell Lysate
Antibody Dilution: 1.0µg/ml

Host: Rabbit
Target Name: SAM15
Sample Type: HT1080 Whole Cell lysates
Antibody Dilution: 1.0ug/ml