

Product datasheet for **TA356981**

Cct7 Rabbit Polyclonal Antibody

Product data:

Product Type:	Primary Antibodies
Applications:	WB
Reactivity:	Human
Host:	Rabbit
Clonality:	Polyclonal
Specificity:	Expected reactivity: Cow, Dog, Guinea Pig, Horse, Human, Mouse, Rabbit, Rat, Zebrafish Homology: Cow: 100%; Dog: 100%; Guinea Pig: 100%; Horse: 92%; Human: 100%; Mouse: 92%; Rabbit: 100%; Rat: 100%; Zebrafish: 85%
Formulation:	Liquid. Purified antibody supplied in 1x PBS buffer with 0.09% (w/v) sodium azide and 2% sucrose. <i>Note that this product is shipped as lyophilized powder to China customers.</i>
Concentration:	lot specific
Purification:	Affinity Purified
Conjugation:	Unconjugated
Storage:	For short term use, store at 2-8°C up to 1 week. For long term storage, store at -20°C in small aliquots to prevent freeze-thaw cycles.
Stability:	Shelf life: one year from despatch.
Predicted Protein Size:	60kDa
Gene Name:	chaperonin containing Tcp1, subunit 7 (eta)
Database Link:	NP_031664 Entrez Gene 10574 Human P80313
Background:	Cct7 is a molecular chaperone; It assists the folding of proteins upon ATP hydrolysis. It is known to play a role, in vitro, in the folding of actin and tubulin.
Synonyms:	CCT-eta; CCTETA; CCTH; MGC110985; NIP7-1; TCP-1-eta; TCP1ETA

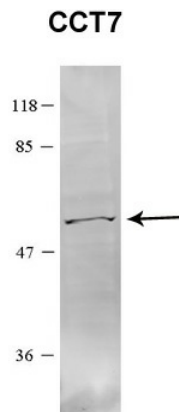


[View online »](#)

Product images:



Cct7 antibody - C-terminal region (TA356981) validated by WB using 293T cells lysate at 1:1,000 dilution for antibody samples and 1:10,000 for secondary antibodies.



Sample Type: HEK 293 (10ug)
Primary Dilution: 1:1000
Secondary Antibody: conjugated goat anti-rabbit
Secondary Dilution: 1:10,000
Image Submitted By: Amy Gray
 Brigham Young University

See Immunoblot 2 Data and Customer Feedback tab for more information.