

## Product datasheet for **TA356971**

### CROCCP3 Rabbit Polyclonal Antibody

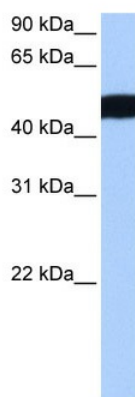
#### Product data:

Product Type:	Primary Antibodies
Applications:	WB
Reactivity:	Human
Host:	Rabbit
Clonality:	Polyclonal
Immunogen:	The immunogen is a synthetic peptide directed towards the N terminal region of human CROCCL2
Specificity:	<b>Expected reactivity:</b> Cow, Dog, Guinea Pig, Human, Mouse, Pig, Rabbit, Rat <b>Homology:</b> Cow: 92%; Dog: 100%; Guinea Pig: 83%; Human: 92%; Mouse: 85%; Pig: 92%; Rabbit: 100%; Rat: 92%
Formulation:	Liquid. Purified antibody supplied in 1x PBS buffer with 0.09% (w/v) sodium azide and 2% sucrose. <i>Note that this product is shipped as lyophilized powder to China customers.</i>
Concentration:	lot specific
Purification:	Affinity Purified
Conjugation:	Unconjugated
Storage:	For short term use, store at 2-8°C up to 1 week. For long term storage, store at -20°C in small aliquots to prevent freeze-thaw cycles.
Stability:	Shelf life: one year from despatch.
Predicted Protein Size:	47kDa
Gene Name:	ciliary rootlet coiled-coil, rootletin pseudogene 3
Database Link:	<a href="#">XP_057040</a> <a href="#">Entrez Gene 114819 Human</a> <a href="#">Q8IVE0</a>
Background:	CROCCL2 belongs to the rootletin family. The exact functions of CROCCL2 remain unknown.
Synonyms:	CROCCL2; dj798A10.2



[View online »](#)

## Product images:



WB Suggested Anti-CROCC2 Antibody Titration:  
0.2-1 ug/ml  
Positive Control: MCF7 cell lysate