

Product datasheet for **TA356970**

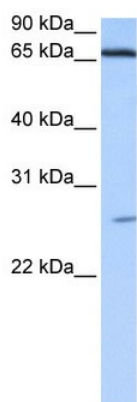
ZNF879 Rabbit Polyclonal Antibody

Product data:

Product Type:	Primary Antibodies
Applications:	WB
Reactivity:	Human
Host:	Rabbit
Clonality:	Polyclonal
Immunogen:	The immunogen is a synthetic peptide directed towards the N terminal region of human DKFZp686E2433
Specificity:	Expected reactivity: Human
Formulation:	Liquid. Purified antibody supplied in 1x PBS buffer with 0.09% (w/v) sodium azide and 2% sucrose.
Concentration:	lot specific
Purification:	Affinity Purified
Conjugation:	Unconjugated
Storage:	For short term use, store at 2-8°C up to 1 week. For long term storage, store at -20°C in small aliquots to prevent freeze-thaw cycles.
Stability:	Shelf life: one year from despatch.
Predicted Protein Size:	77kDa
Gene Name:	zinc finger protein 879
Database Link:	XP_293828 Entrez Gene 345462 Human B4DU55
Background:	The exact functions of DKFZp686E2433 remain unknown.
Synonyms:	DKFZp686E2433



[View online »](#)

Product images:

WB Suggested Anti-DKFZp686E2433 Antibody
Titration: 0.2-1 ug/ml
Positive Control: Human heart