

Product datasheet for **TA356969**

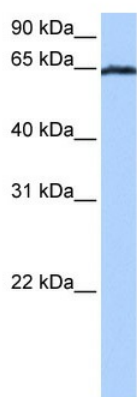
EBF4 Rabbit Polyclonal Antibody

Product data:

Product Type:	Primary Antibodies
Applications:	WB
Reactivity:	Human
Host:	Rabbit
Clonality:	Polyclonal
Immunogen:	The immunogen is a synthetic peptide directed towards the C terminal region of human EBF4
Specificity:	Expected reactivity: Human, Mouse Homology: Human: 100%; Mouse: 79%
Formulation:	Liquid. Purified antibody supplied in 1x PBS buffer with 0.09% (w/v) sodium azide and 2% sucrose.
Concentration:	lot specific
Purification:	Affinity Purified
Conjugation:	Unconjugated
Storage:	For short term use, store at 2-8°C up to 1 week. For long term storage, store at -20°C in small aliquots to prevent freeze-thaw cycles.
Stability:	Shelf life: one year from despatch.
Predicted Protein Size:	68kDa
Gene Name:	early B-cell factor 4
Database Link:	XP_044921 Entrez Gene 57593 Human Q9BQW3
Background:	EBF4 belongs to the COE family and contains 1 IPT/TIG domain. EBF4 is a transcriptional factor which recognizes variations of the palindromic sequence 5'-ATTCCCNNGGGAATT-3'.
Synonyms:	COE4; EBF-4; KIAA1442; O/E-4; OE-4; RP5-860F19.3



[View online »](#)

Product images:


WB Suggested Anti-EBF4 Antibody Titration: 0.2-1
ug/ml
Positive Control: Jurkat cell lysate