

## Product datasheet for **TA356968**

### EBF4 Rabbit Polyclonal Antibody

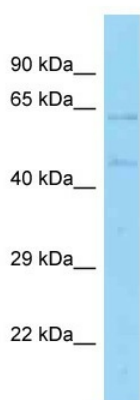
#### Product data:

Product Type:	Primary Antibodies
Applications:	WB
Reactivity:	Human
Host:	Rabbit
Clonality:	Polyclonal
Specificity:	<b>Expected reactivity:</b> Cow, Dog, Guinea Pig, Horse, Human, Mouse, Pig, Rabbit, Rat <b>Homology:</b> Cow: 100%; Dog: 100%; Guinea Pig: 93%; Horse: 100%; Human: 100%; Mouse: 93%; Pig: 100%; Rabbit: 100%; Rat: 100%
Formulation:	Liquid. Purified antibody supplied in 1x PBS buffer with 0.09% (w/v) sodium azide and 2% sucrose.
Concentration:	lot specific
Purification:	Affinity Purified
Conjugation:	Unconjugated
Storage:	For short term use, store at 2-8°C up to 1 week. For long term storage, store at -20°C in small aliquots to prevent freeze-thaw cycles.
Stability:	Shelf life: one year from despatch.
Predicted Protein Size:	64kDa
Gene Name:	early B-cell factor 4
Database Link:	<a href="#">NP_001103984</a> <a href="#">Entrez Gene 57593 Human E9PEI2</a>
Background:	EBF4 belongs to the COE family and contains 1 IPT/TIG domain. EBF4 is a transcriptional factor which recognizes variations of the palindromic sequence 5'-ATTCCCNNGGAATT-3'.
Synonyms:	COE4; EBF-4; KIAA1442; O/E-4; OE-4; RP5-860F19.3



[View online »](#)

Product images:



WB Suggested Anti-EBF4 Antibody  
Titration: 1.0 ug/ml  
Positive Control: HT1080 Whole Cell